

Volume 4, Issue 1

PURCHASE

RENT

MAINTENANCE

SUPPORT

FIELD EQUIPMENT & SUPPLIES

FOR SURVEYORS, CONTRACTORS
AND ENGINEERS

SHOP NOW



Duncan
 **Parnell**

duncan-parnell.com | 1-833-834-3935

WHY CHOOSE DUNCAN-PARNELL?

A Partner You Can Trust.

- ✓ Longevity
- ✓ Experience
- ✓ Values
- ✓ Support
- ✓ Quality

NEED RENTAL GEAR?

With a vast selection of survey and mapping equipment available for rent, we can help address your specific project needs.

- ✓ Latest technology
- ✓ Daily, weekly & monthly rates
- ✓ All pieces inspected & recalibrated



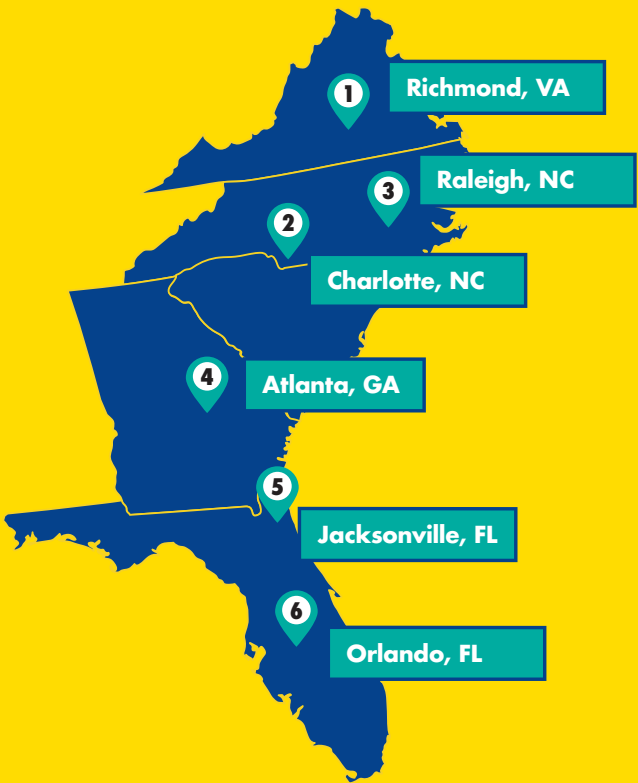
SOME OF OUR RENTAL EQUIPMENT INCLUDES:

- Trimble® S5 Robotic Total Station
- Trimble® SX12 Robotic Scanning Total Station
- Trimble® R12i GNSS Receiver
- Trimble® TSC7 Data Collector
- Trimble® R1 GNSS Receiver
- Trimble® Geo7 Handheld

Daily, weekly and monthly rates available! Visit Duncan-parnell.com/geospatial-equipment-for-rent for details.

SERVICE

Your project's success means a lot, so we take it seriously just as you do.



- ✓ Over 180 combined years of experience
- ✓ 6 convenient Trimble-certified service centers across the Southeast



Prices Subject to Change



PRESKO MARKING FLAGS**

SIZE	ITEM #	PRICE PER BUNDLE ¹
2-in x 3-in x 21-in	2321	\$9.95
4-in x 5-in x 30-in	4530	\$13.95

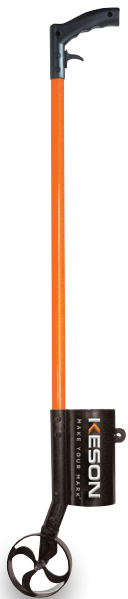
- 100 per bundle



\$28⁹⁵

PAINT MARKING WAND APPLICATOR #PA35

- Pistol grip and trigger to spray exactly where you want it
- Paint can sleeve fits all standard inverted aerosol paint cans



PRESKO ROLL FLAGGING**

COLOR	ITEM #	PRICE PER ROLL ¹
Orange Glo	27OG	\$2.15
Pink Glo	27PG	\$2.15
Blue Glo	27BG	\$2.15
Lime Glo	27LG	\$2.15
White	27W	\$2.15
Blue	27B	\$2.15
Red	27R	\$2.15

¹When you purchase in quantities of 12 or more rolls.

SECO
\$12⁰⁹

PAINT SPRAY CAN HOLDER #8098-00-ORG

- Heavy-duty nylon with belt loop



PAINT AND FLAGGING

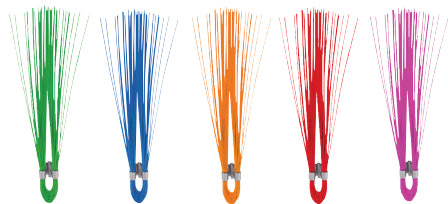


\$3¹⁹ each

AERVOE INDUSTRIAL PAINT PEN

#1226 (black); #1227 (white); #1221 (red); #1222 (yellow)

- Fast drying and for applications such as wood, glass, metal and many other surfaces.



PRESKO STAKE WHISKERS**

COLOR	ITEM #	PRICE PER BUNDLE
Green	W6 G	\$16.99
Orange	W6 O	\$16.99
Pink	W6 P	\$16.99
Blue	W6 B	\$16.99
Red	W6 R	\$16.99

- Box=100 whiskers, 4 bundles of 25

AERVOE MARKING PAINT*



COLOR	ITEM #	PRICE PER CAN ¹
Pink Flo	229	\$5.75
Orange Flo	222	\$5.75
Yellow Flo	226	\$5.75
White	207	\$5.75
Red	201	\$5.75
Blue	203	\$5.75
Black	206	\$5.75

¹When you purchase in quantities of 12 or more cans.



*More options available at duncan-parnell.com



NAILS AND FIELD BOOKS

BAGS

SUPPLIES

\$12⁹⁵

TACKS
#25456855

- 1-lb box
- 3/4-in length



\$180 each

CHRISNIK INDUSTRIAL MARKER - BLACK
#2810550

- 6-in
- Waterproof



\$2⁹⁵

MARKING PEN
#8135-01

- Black, blue, red, green

\$19⁵⁰

CHRISNIK MAG HUB DISC
#24HUBDISC

- 100 hub disc survey markers
- Hub disc diameter 1/2"
- Nail hole diameter 1/8"



CHRISNIK MAG NAILS

SIZE	ITEM #	PRICE PER BOX ¹
1-in x 5/32-in	241000	\$10.35
1 1/4-in x 3/16-in	241250	\$14.95
1 1/2-in x 1/4-in	241500	\$19.95
2-in x 1/4-in	242000	\$28.95
2 1/2-in x 1/4-in	242500	\$28.95

• 100 per box

CHRISNIK MAG HUB

SIZE	ITEM #	PRICE PER BOX ¹
3/16-in x 4-in	23MAGHUB4	\$99.95
1/4-in x 6-in	23MAGHUB6	\$99.95
1/4-in x 8-in	23MAGHUB8	\$99.95

\$23⁸⁸

CELL PHONE CASE, GPS, SHORT
#8143-22-FLY



\$52⁹⁵

SECO JUMBO PRISM BAG
#8081-00-ORG

- For triple prisms and prism targets, or tribrachs
- 10-in x 9.5-in x 3-in



\$238⁰⁰

SECO TOTAL STATION CASE - FRONT LOAD
#8120-00-ORG

- 14-in x 9-in x 7-in
- Loads from the front



\$278⁹⁵

SECO TOTAL STATION BACK PACK
#8120-30-ORG

- Features high-density foam wrap that securely cradles all 400mm height total stations



\$38⁹⁵

SECO SINGLE PRISM BAG
#8070-00-ORG

- 5-in x 7-in x 2-in
- Heavily padded for single prisms



\$40⁹⁵

SECO TRIPLE PRISM BAG
#8080-00-ORG

- 9-in x 7-in x 2-in



\$52⁸⁵

SECO 36-IN HEAVY DUTY LATH BAG
#8100-20-ORG

- Designed 36-in deep



\$75⁹⁵

SECO 48-IN HEAVY DUTY LATH BAG WITH POCKETS
#8101-20-ORG

- Features a hand loop, shoulder strap, & outside pocket



\$57⁹⁵

SECO 18-IN STAKE BAG
#8090-20-ORG

- Designed to hold 18-in stakes or rebar
- Features include hammer loop, adjustable strap and brass grommet drain holes



\$64⁹⁵

SECO 24-IN STAKE BAG
#8092-20-ORG

- Designed to hold 24-in stakes or rebar
- Features include hammer loop, adjustable strap and brass grommet drain holes





SAFETY WEAR

SUPPLIES

\$3⁰⁹

ERB SAFETY GLASSES #17969

- Frameless wraparound design fit provides optical protection
- 4-position adjustable temple with non-slip rubber tips.



\$14⁹⁵

ERB SAFETY HARD HAT #19951

- Secure-Fit ratchet features an easy turn knob
- Adjusts to over 40 different head sizes

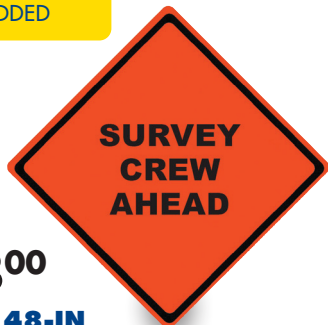


\$250⁰⁰

STANDARD ROLL-UP SIGN STAND #S-STAND-RU

- Secure-Fit
- Stand only

ANY LETTERING
CAN BE ADDED



\$238⁰⁰

48-IN X 48-IN ROLL-UP SIGN #S-48X48CUSTRU

- Any lettering can be added
- Sign only

\$99⁹⁵

ERB CLASS 3 3-IN-1 SAFETY BOMBER JACKET #W550

- With contrasting trim and black bottom
- Waterproof poly 300D oxford w/breathable PU coating
- 3-in-1 jacket w/removable fleece liner & detachable hood



ADD YOUR
COMPANY'S LOGO
TO YOUR SAFETY
VEST ORDER.

➤ ASK US HOW.

More colors and options available
at duncan-parnell.com

\$15⁹⁵

ERB CLASS 2 MESH ZIPPER SAFETY VEST WITH CONTRASTING TAPE #S383P

- Class 2 with zipper front; Multiple pockets interior and exterior; AwareLite reflective trim. Sizes SM-6X. 2 colors (yellow and orange)



\$9⁹⁵

ERB CLASS 2 ECONOMY MESH ZIPPER SAFETY VEST #S363P

- Class 2 with zipper front; 2 exterior waist pockets; AwareLite reflective trim. Sizes XS - 5X



\$33⁹⁵

ERB CLASS 2 PREMIUM SURVEYOR'S SAFETY VEST #S251

- Class 2 polyester mesh w/ zippered clipboard pocket, multiple smaller pockets and grommets
- MD-5X
- 2 Colors (yellow and orange)



\$46⁹⁵

ERB CLASS 2 DELUXE SURVEYOR'S MULTI- POCKET SAFETY VEST #S252C

- Class 2 surveyor's style vest. Solid front, mesh back w/15 pockets
- SM-5X
- 2 colors (yellow and orange)



PLUMB BOB

- Precision-machined from solid brass



WEIGHT	ITEM #	PRICE
16-oz	6000-016	\$22.90
18-oz	6000-018	\$23.90
24-oz	6000-024	\$32.90

\$13⁹⁰

PRISM POLE POINT #5190-00

- 3.37-in steel body



\$11²⁰

HEX SHARP POINT WITH REPLACEABLE TIP #5194-05

- Anodized aluminum body
- Easy-to-replace steel point



\$9⁹⁵

TACK BALL #2180-00

- Rubber ball used as a pin cushion for holding stake tacks



\$12⁹⁰

PLUMB BOB SHEATH #6000-160

- Designed for 14-to-18-oz plumb bobs



\$3⁴⁵

SHARP POINT FOR TRIPOD OR PRISM POLE #5194-003

- Hardened steel replacement point for most tripods and prism pole points



\$98⁹⁵

CENTER POINT PUNCH #5194-10

- Center punch point fits all poles or products with male 5/8-in x 11-in threads



\$20⁴²

TOPO SHOE #5191-00

- 3.37-in aluminum body



\$15⁰⁰

6-FT GAMMON REEL #8124-50

- Steel clock spring zips string back into case



\$87²⁰

PRISM POLE ADJUSTING PEG JIG #5195-01

- Convenient for adjusting and calibrating pole vials in the office



\$41⁵⁰

SECO WIDE BASE TOPO SHOE #5192-00

- 3.37-in aluminum body



SUPPLIES



PRISM AND PRISM POLES

ACCESSORIES

seco

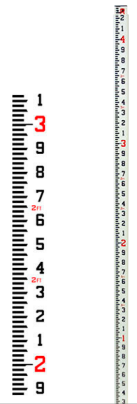


PRISM POLES TLV AND TWIST-LOCKING TELESCOPIC

- The aluminum twisting lock with vial pole is wear-resistant for longevity
- The soft rubber knob is easy to tighten or loosen
- TLV locks feature a convenient 40-minute vial built into the lock

ITEM	EXTENDED	COLLAPSED	GRADS	PRICE
5500-11	8.53-ft	4.97-ft	dual	\$149.95
5500-21	11.81-ft	5.18-ft	dual	\$201.95
5500-23	5.1-ft	2.7-ft	dual	\$185.95
5500-30	15.25-ft	5.41-ft	dual	\$262.95

seco



LEVELING RODS

- Scale width is graduated to fill the entire face of the rod and measuring scale on the back side
- Laser detector mounting with no special brackets required

ITEM	EXTENDED	GRADS	PRICE
92041	16-ft	10ths	\$138.99
92042	16-ft	inches	\$138.99
92031	20-ft	10ths	\$150.95
92032	20-ft	inches	\$150.95
98010	25-ft	10ths	\$212.19

seco



\$152⁹⁵

SECO BI-POD

#5217-04-YEL

- Simply clamp the pole into place without lifting and threading it through the bipod head
- Within seconds the operator can set up a free-standing GPS antenna pole or prism pole
- Legs extend to 6 feet (1.8 m)

seco



\$193⁵⁰

MINI PRISM MONO POD KIT

#5216-00

- Easy to set up
- Ideal for construction surveys, inspections, asbuilts and more
- 2.25 lb



\$299⁹⁵

GPS POLE CARBON FIBER

#5128-00

- Featherweight two-section carbon fiber composite rover rod is ideal for GPS
- The rod has a fixed height of 2 meters
- 40-minute adjustable vial.

seco



\$295⁵⁰

SECO CARBON FIBER ROBOTICS POLE

#5129-52

- Extends from 4.97 ft up to 11.81 ft
- TLV locking mechanism
- Built-in 40-minute vial
- Poles loaded through top, with legs extending to 6 ft and collapses to 43 in.

TRIPODS AND TRIBRACHS



ACCESSORIES

seco



\$78⁹⁵

CONTRACTORS QUICK CLAMP TRIPOD - BLACK

#5301-25-BLK

- Accommodate 5/8 x 11 instruments and is designed for all types of jobs
- Features a quick clamp and a triangle/flat head
- Telescopic aluminum (round) legs allow for set-up to extend to 63.5-in
- 7.45-lb

seco



\$325⁶⁵

TRIMAX TRIPOD

#90550

- Can handle equipment up to 65 lbs
- Quick clamp lock type
- Fiberglass legs
- Extends to 71-in
- 17-lb

seco



\$104⁹⁵

ALUMINUM TRIPOD QUICK CLAMP

#5301-21-ORG

- The telescopic aluminum (round) legs allow for setup
- Extends to 65-in
- Quick clamp lock type with a triangle/flat head
- 9.35-lb

\$96⁹⁵

TRIPOD STABILIZER

#5610-00

- Provides the extra stability required when working on concrete and other hard surfaces
- Heavy-duty aluminum and measures 35x35x35 inches
- Collapses for compact storage

SitePro



\$159⁹⁵

WOOD AND FIBERGLASS TRIPOD - HEAVY DUTY

#01-WDF20-0

- The best value heavy duty wood/fiberglass tripod on the market. Combination of hardwood legs with fiberglass dowels provides stability and weather resistance
- Extended height: 72-in
- Collapsed height: 42-in
- 16lbs, quick clamp

\$132⁹⁵

GPS ROD TRIPOD

#5218-40-YEL

- 1-to-1.5" outside diameter poles thread easily through the open clamp on top
- Legs independently extend to 6' and collapse to 43"



Trimble

\$1433²⁵

TRIMBLE® 360 PRISM

#58020002

- Includes height adapter to layout rod



Trimble

\$3260²⁵

TRIMBLE® MT1000 MULTI-TRACK PRISM

#MT1000

- Both active & passive tracking to locate and lock onto the correct target
- Includes 7.4 V. lithium-ion battery



seco

\$222⁰⁰

2-IN SILVER PREMIER PRISM ASSEMBLY

#6422-21-FLB

- Heavy-duty silver coated prism for premium accuracy
- Prism can be mounted in either 0 or -30mm offset positions



\$119⁹⁵

PRISM SYSTEM 25MM

#6200-11-FOR

- Features a 25mm copper-coated prism, for fog prevention, a tilting holder, with friction axis, zero or -30mm offset
- 40-min adjustable circular side-mounted vial



seco

\$168⁹⁵

OPTICAL PLUMMET TRIBRACH WITH TWIST FOCUS

#2152-04-BLK

- Twist focus (2.5X mag) and leveling screws with center line
- Focusing range of 1.5 to 50-ft



Trimble

\$342³⁰

TRIMBLE® TRIBRACH

#78607007

- Without optical plummet
- Compatible with the "S" series total stations



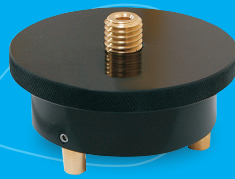
Trimble

\$493⁵⁰

TRIMBLE® TRIBRACH OPTICAL PLUMMET

#58002007

- Accuracy of 0.5 mm/1.5 m
- Magnification 2X
- Compatible with the S-Series total stations



seco

\$52⁹⁵

ROTATING TRIBRACH ADAPTOR

#2020-00

- This rotating friction top tribrach adaptor allows prism to be pointed after installation in the tribrach
- Fits all tribrachs



MEASURING DEVICES

MEASURING DEVICES



ACCESSORIES

ACCESSORIES

\$118⁷⁵
ROLATAPE
MEASURING WHEEL
WITH STAND 3-FT
#32-300S

- ✓ All steel construction — heavy-duty strength and durability
- ✓ 5-digit ratchet counter — measures up to 100,000-ft
- ✓ Calibrated wide rubber wheel
- ✓ Insert-and-lock handle



\$45⁹⁵
KESON
ROAD RUNNER
MEASURING WHEEL
#RR112

- Handle telescopes from 17-in (fits into a toolbox) up to 38-in
- Weighs less than 2-lb



\$149⁹⁵
ROLATAPE
MEASURING WHEEL
400-FT 4-FT
#32-400

- All steel construction — heavy-duty strength and durability
- 5-digit counter



\$164⁸⁹
KESON
MEASURING WHEEL
11.5-IN DIAMETER
#MP301

- Rugged 3/4-in steel frame, tough enough to handle any terrain
- Barrel clamp locks the handle upright
- 5-digit critical counter



\$174⁹⁵
KESON
MEASURING WHEEL
15.5-IN DIAMETER
#MP401

- 15.5-in diameter
- Metal wheel
- Built for rough terrain



\$269⁹⁵ **SMART TOOL**
24" LEVEL
#92500

\$279⁹⁵ **SMART TOOL**
48" LEVEL
#92505

- Patented sensor technology
- Accurate to 1/10 of a degree



\$22⁹⁰
RHINO FIBERGLASS
FOLDING RULER
#4770-00

- 5/8-in x 6-ft
- Tenths/Hundredths



\$29⁹⁵
LUFKIN WOOD FOLDING
ENGINEER RULER
#182-1066DN

- 5/8-in x 6-ft
- Metric and English



seco
SECO FIBERGLASS TAPE

SIZE	FEATURES	ITEM #	PRICE
100-ft	Tenths/Hundredths	3003-06	\$14.95
200-ft	Tenths/Hundredths	3003-07	\$25.95

SECO STEEL/NYLON TAPE

SIZE	FEATURES	ITEM #	PRICE
100-ft	Tenths/Hundredths	3006-06	\$32.95
200-ft	Tenths/Hundredths	3006-07	\$52.95

LUFKIN FIBERGLASS TAPE

SIZE	FEATURES	ITEM #	PRICE
100-ft	Tenths/Hundredths	182-FE100D	\$27.96
200-ft	Tenths/Hundredths	182-FE200D	\$44.85
300-ft	Tenths/Hundredths	182-FE300D	\$69.95



seco
25-FT SECO POCKET TAPE

SIZE	FEATURES	ITEM #	PRICE
25-ft x 1-in	Tenths	4769-00	\$12.42
25-ft x 1-in	Tenths/Inches	4769-02	\$12.42



seco
33-FT SECO POCKET TAPE

SIZE	FEATURES	ITEM #	PRICE
33-ft x 1-in	Tenths	4769-03	\$15.95
33-ft x 1-in	Tenths/Inches	4769-04	\$15.95



\$12⁹⁵
KOMELON® 25-FT SELF-LOCK™
ENGINEERING TAPE
#833690

- Impact resistant rubberized case



KOMELON® THE PROFESSIONAL
ENGINEERING TAPE

SIZE	ITEM #	PRICE
25-ft	4251EHV	\$14.95



MAGNETIC LOCATORS | RADIOS

SUPPLIES

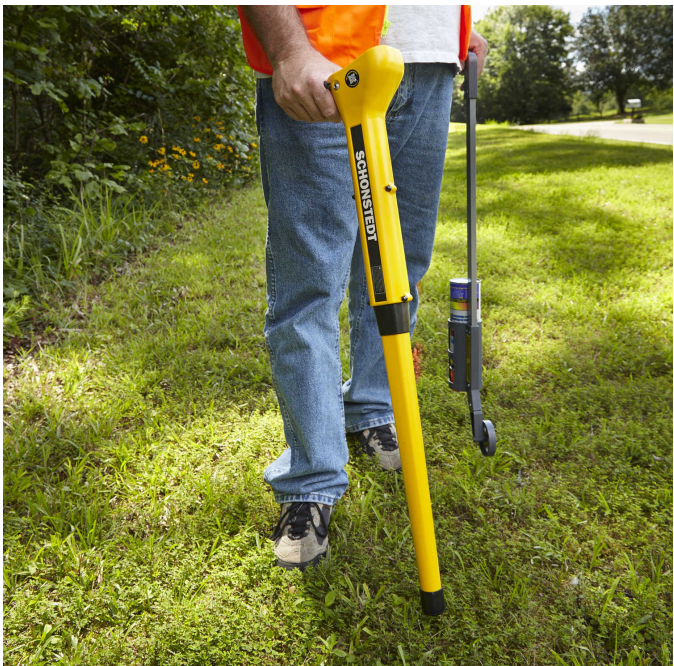
**CALL FOR TRADE-IN
OPTIONS**

\$904⁸⁸

SCHONSTEDT® MAGGIE MAGNETIC LOCATOR

#MAGGIE

- Highest sensitivity
- Perfect choice for all locating professionals: utilities, surveying, water & sewer, gas & oil and construction
- Ergonomic & durable
- Dust & water resistant (Rated IP54)
- 24-hr battery life



\$925⁰⁰

SUBSURFACE ML-1 MAGNETIC LOCATOR

#ML-1

- Detection of ferrous metal objects, including property pins and markers, live wires, weapons, devices and other objects
- Easy, one-handed operation – 3 keypad switches: on/off, increase sensitivity, decrease sensitivity
- Lightweight: just over 2-lbs



\$966⁸⁴

SCHONSTEDT® GA-52CX

#GA52CX

- High sensitivity with 5 levels
- Audio output
- No response to brass, aluminum or copper
- 40-hr battery life



\$1025⁰⁰

SUBSURFACE ML-3S MAGNETIC LOCATOR

#ML-3S

- Detection of ferrous metal objects, including property pins and markers, live wires, weapons, devices and other objects
- IP68 Certified. Waterproof tested to water depths up to 250-ft and a complete protection against dust, dirt and sand
- 40-in



\$240⁰⁰

MOTOROLA™ 2-WAY RADIO

#RMV2080

- Operates on 27 VHF business exclusive frequencies and is FCC Narrowband ready
- Enhanced audio quality, a rugged design and versatile HTML-based customer programming software make this radio an exceptional choice for all of your on-site business needs.
- Meets military specifications for sealing against dust, wind, shock and vibration
- 2-watt VHF radio provides coverage up 220,000-sq ft/13 floors



\$54⁰⁰

MOTOROLA™ REMOTE SPEAKER MICROPHONE

#HKLN4606

- Speaker, microphone, PTT and clip
- Convenient way to listen and talk while radio remains clipped to belt or worn in pocket
- Clip mic anywhere on user's body

DATA COLLECTOR ACCESSORIES

ACCESSORIES



\$87¹⁵

TRIMBLE® TSC7 CARRY CASE SHOULDER BAG

#121354-01-1



\$352⁸⁰

TRIMBLE® TSC7 EXTERNAL BATTERY CHARGER WITH INT CORD

#121348-01-1



\$238³⁵

TRIMBLE® TSC7 RECHARGEABLE BATTERY 2 PACK

#121320-01-1



\$94⁸⁸

POLE CLAMP CRADLE

#5200-150



\$103⁶²

TRIMBLE® TSC3 CLAMPS

#5200-065



\$140⁵⁴

TRIPOD HOOK TSC7/RANGER 7

#5196-22



\$192⁴⁰

CLAW POLE CLAMP FOR HEAVY CONTROLLER

#5200-167



\$129⁹⁵

TRIMBLE® TSC5 CRADLE

#5200-080



\$71⁶¹

POLE MOUNT BRACKET

#121952-01-GEO

- TSC5 simply snaps into the lock; to remove, squeeze and pull the latch



\$365⁸²

TRIMBLE® TSC7 POLE MOUNT KIT

#121349-01-1



\$73⁵⁰

TRIMBLE® TSC7 SCREEN PROTECTOR

#121340-01-1



\$50⁴⁰

STYLUS

#121355-01-1

- Capacitive stylus with tether



\$44¹⁰

ANTENNA

#82766-00

- Trimble Antenna for internal 2.4GHz radio module.
- Works with: Trimble TSC2, Trimble TSC3, Trimble S Series Robotic Total Station



\$27⁶²

SCREEN PROTECTOR

#115896-GEO

- TSC5 Glass Screen Protector 10 pack, includes cleaning cloth, alcohol wipe and dust removal sticker



CHARGERS AND BATTERIES

SURVEY CHARGERS AND BATTERIES



\$109⁰⁰

UNIVERSAL CHARGER FOR GPS BATTERIES

#MCH-1821DP

- Charges original Trimble® batteries



\$214²⁰

TRIMBLE® REPLACEMENT BATTERY

#89840-00

- Compatible models: Trimble® R12, Trimble® R12i, Trimble® R10



\$352⁸⁰

TRIMBLE® ROBOTIC TOTAL STATION REPLACEMENT BATTERY

#99511-30

- Compatible models: Trimble® S3, S5, S6, S7, S8, S9, SX10



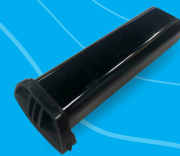
MAPPING/GIS CHARGERS AND BATTERIES

\$204⁷⁵

TRIMBLE® GEO 6000 SERIES & GEO 7 BATTERY

#88004-04

- Allows you to swap battery packs in the field



\$57⁷⁵

TDC150 AC CHARGER WITH CABLE & PLUGS

#116455

- AC Charger
- Power plugs and cable



\$519⁷⁵

TRIMBLE® TDC 600 DUAL BATTERY CHARGER

#118835-00

- Lithium battery for Pro 6/Geo 6000/Geo 7



\$103⁹⁵

BATTERY, BA7800 3.8V 8000MAH FOR TDC600

#124461-10

- User-replaceable, rechargeable battery



\$55⁶⁵

TDC600 AC ADAPTER W/ INT. CORD

#118420

- Kit contains an AC adapter cable with wall plugs for the US, Europe, UK and Australia/New Zealand



\$11⁵⁵

TDC600 SCREEN PROTECTOR

#118831



FIELD TOOLS

\$39⁹⁵

MANHOLE COVER PICK

#4432DP

- 5/8-in hex high grade tool steel
- 32-in length



\$30⁹⁵

MACHETE KNIFE

#08294

- 22-in length
- Carbon steel blade
- Heavy-duty



\$31⁹⁵

PLUMB HAMMER

PLU11529

- 4lbs
- 15-in length
- Wood handle



\$27⁰⁰

MACHETE SHEATH

#44MA22SHEATH

- 22-in length
- All leather



\$87⁸²

16" BUSH AXE

#640C



\$40⁶⁶

48-IN CARBON PROBE

#77543

- Fiberglass tile probe
- 1/2-in diameter x 48-in long shaft



\$52³⁹

SLEDGEHAMMER

#027-1997900

- 8 lbs
- 36-in length



\$9⁹⁹

TECNU OUTDOOR SKIN CLEANSER

#25330



\$12⁹⁹

SAWYER PREMIUM INSECT REPELLENT

#SP602



\$7⁴⁰

BEE BOPPER WASP AND HORNET SPRAY

#25343



Prices Subject to Change

NEED STAKES OR REBAR? VISIT ONE OF OUR LOCAL BRANCHES.

ACCESSORIES



ROBOTIC TOTAL STATIONS



SPECTRA® ROBOTIC TOTAL STATION BUNDLE

Spectra® Focus 50 Robotic Total Station

- Magdrive instrument drive system moves silently while it precisely and reliably turns to and repeats angle measurements, including endless fine adjustment
- SurePoint technology eliminates the angular measurement errors associated with tripod movements in real time
- Autolock automatically tracks and locks onto prisms to reduce errors related to manual aiming and also reduces down time by not having to re-point the instrument for every observation
- Available in AutoLock, Short Range Robotic or Long Range Robotic models

SPECTRA®
GEOSPATIAL

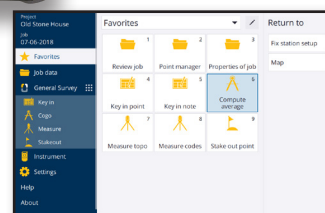
This price includes 3" angular accuracy, Ranger 5 data collector, Origin Software, 360 prism, as well as tripod, bipod, pole bracket, batteries and charger.

**BUNDLE PRICING
AS LOW AS
\$432⁰⁰
PER MONTH***

Spectra®
Ranger 5
Data Collector



Spectra® Focus 50



Origin Software

Spectra® Ranger 5 Data Collector

- Fast & powerful 2.2 GHz processor with 4GB memory and 64 GB onboard storage

Origin Software

- Supports Spectra Geospatial Android and Windows devices
- Fully featured stakeout including points, lines, arcs and polylines
- Cloud connectivity for data transfer and communication between the field and office

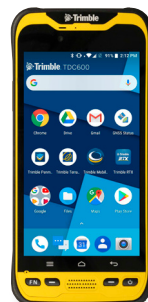
NEW PRODUCT



Trimble® S5 Robotic
Total Station

This price includes 3" angular accuracy, TDC600 with radio, Trimble® Access™, MT1000 prism, as well as tripod, bipod, pole bracket, batteries and charger.

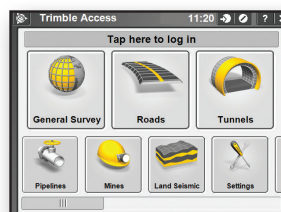
**BUNDLE PRICING
AS LOW AS
\$489⁰⁰
PER MONTH***



Trimble®
TDC600
Handheld



Trimble®
MT1000
Prism



Trimble® Access™

TRIMBLE® S5 ROBOTIC TOTAL STATION BUNDLE

Trimble® S5 Robotic Total Station

- Everything you need to perform survey campaigns
- Optional 1", 2", 3" or 5" accuracy
- Integrated L2P technology

Trimble® TDC600 Handheld with radio

- All-in-one GNSS data collector and smartphone
- 6-inch high resolution sunlight-readable display
- Real-time positioning with built-in GNSS receiver

Trimble® MT1000 Prism

- Both active & passive tracking to locate and lock-on to the correct target
- Includes 7.4 V. Lithium-Ion battery

*Subject to credit approval. Finance price based on a 60 month term. Financing underwritten by GreatAmerica Financial. One time origination fee of \$150 will apply.

Prices Subject to Change



This price includes 3" angular accuracy, TSC5 controller and Trimble Access™

**PACKAGES
AS LOW AS
\$532⁰⁰
PER MONTH***

TRIMBLE® S5 ROBOTIC TOTAL STATION

Built on proven Trimble® technologies—including Trimble® SurePoint™ and MagDrive™ technology and our DR Plus EDM—this is the no-nonsense workhorse that works efficiently and dependably while maintaining the highest possible accuracy.



- ✓ 1", 2", 3" or 5" angular accuracy
- ✓ Everything you need to perform survey campaigns
- ✓ Trimble®-patented active tracking with option of track-light technology
- ✓ Measure further and faster with the Trimble® DR Plus EDM
- ✓ Complete field-to-office solution for quick data capture and processing



This price includes 3" angular accuracy, TSC5 controller and Trimble Access™

**PACKAGES
AS LOW AS
\$581⁰⁰
PER MONTH***

TRIMBLE® S7 ROBOTIC TOTAL STATION

The S7 Total Station combines scanning, imaging and surveying into one powerful solution. Create 3D models, high accuracy visual site documentation, point clouds and more using the Trimble® S7, Trimble® Access™ field software and Trimble® Business Center office software.

- 1", 2", 3" or 5" angular accuracy
- Improved Trimble® VISION™ technology for video robotic control, scene documentation and photogrammetric measurements
- Trimble® DR Plus for long range and superior accuracy
- Complete field-to-office solution for quick data capture and processing
- Trimble®-patented active tracking technology



This price includes 1" accuracy, TSC7 controller and Trimble Access™

**PACKAGES
AS LOW AS
\$722⁰⁰
PER MONTH***

TRIMBLE® S9 ROBOTIC TOTAL STATION

The Trimble® S9 Total Station integrates the best field technologies plus our highest level of accuracy and specialized engineering features for the ultimate in performance and precision. Whether your project involves monitoring, tunneling, or another highly specialized application, the S9 is the solution.

- Available 0.5" or 1" angular accuracy
- Trimble® DR Plus or DR HP EDM for optimal speed, accuracy and reliability
- Optional Trimble® VISION™ and SureScan technology and active tracking
- Complete field-to-office solution for quick data capture and processing
- Trimble® 4D Control software for monitoring management



RELIABLE DATA IN. RELIABLE DATA OUT

- ✓ One-man operation lets you complete more work without adding to your team
- ✓ Enhance accuracy with up to 1 arc second precision and technology that ensures you're locked on your prism, not someone else's
- ✓ Reduce errors associated with manual methods
- ✓ Calculate coordinates quickly and accurately – saving you time in the field

EXPAND YOUR BUSINESS WITHOUT EXPANDING YOUR TEAM:

3D LASER SCANNING

With labor shortages affecting nearly all industries – including surveyors and contractors – 3D laser scanners provide a much needed boost in productivity.

Not only can 3D laser scanners improve your workflows by increasing productivity and allowing you to collect richer and more accurate data, but it can also help you grow your business and stand out in your field! With 3D laser scanning you can:



TRIMBLE X7 3D LASER SCANNER

● COMPLETE MORE WORK IN LESS TIME

Whether you have multiple crews or are part of a small team, adding a 3D laser scanner to your workflow will instantly give a boost to your team’s productivity.

● CAPTURE HIGH-ACCURACY DATA

Traditional surveying methods are not only more time-consuming but are also naturally more prone to human error. However, introducing 3D laser scanning to your survey workflows makes it easy to capture dense points, quickly and accurately.

● WORK OUT OF HARM’S WAY

Whether your project is near a busy highway or you’re capturing the damage after a natural disaster, innovative 3D laser scanners improve the way you work while keeping you and your team safe.

● STAY COMPETITIVE

Investing in a 3D laser scanner allows you to quickly add 3D scanning to the list of services you offer, without significantly adding to your team’s current workload.

NEW PRODUCT



TRIMBLE X7 3D SCANNER

- Compact, lightweight design makes it easy to transport and set up, no matter the environment
- Capture millions of data points in a fraction of the time it would take to capture significant features using traditional topographic survey methods.
- Fast image capture with Trimble® VISION™ technology
- Self-leveling
- Auto-registration



CALL FOR QUOTE

TRIMBLE® SX12 SCANNER AND ROBOTIC TOTAL STATION

- This innovative and versatile solution allows users to collect any combination of high-density 3D scan data, enhanced Trimble® VISION™ imaging and high-accuracy total station measurements, allowing you to capture exactly what you need, saving you time and money on every job.
- Combines surveying, imaging and high-speed 3D scanning in one revolutionary solution
- Scanning speeds of up to 26k points/sec and ranges up to 600m
- Complete integration with Trimble® Access™ and Trimble® Business Center software.
- Total zoom magnification = 107x



CALL FOR QUOTE

TRIMBLE® TX SERIES SCANNER

- The Trimble® TX Series of 3D laser scanners offers you pure time of flight scanning to quickly capture dense scan data on large projects with consistent accuracy over the full scan range.
- Trimble®’s 3D laser scanning solutions provide a cost effective and efficient method for gathering existing locations of structural components.

Model	Scanning Speed	Range
TX6	500k pts/sec	80m standard/120 extended
TX8	1 million pts/sec	120m standard/340 extended

ZEB HORIZON MOBILE SCANNER FROM GEOSLAM

With a range of 100m, the ZEB Horizon is great for outdoor use including spaces where features are positioned further apart. Its lightweight and compact design also makes it perfect for indoor surveys. With a collection rate of 300,000 pts/sec, and an accuracy* of 1-3cm, it’s suitable for a vast array of applications including:

- 2D floor plan generation
- 3D volumetric calculations
- Measured Building Surveys
- Scan-to-BIM



CALL FOR QUOTE



MECHANICAL TOTAL STATIONS



Trimble

AS LOW AS
\$223⁰⁰
PER MONTH*

TRIMBLE® C3 MECHANICAL TOTAL STATION†

The Trimble® C3 mechanical total station delivers the range of features you expect and the accuracy you need, whatever the project or terrain.

- Autofocus powered by Nikon®
- Powerful, long-range EDM
- Compact, lightweight and rugged system design — simplifying storage, transport, and handling.
- Onboard data collection software ensures smooth, efficient workflows
- Dual face displays. Available in 1", 2", 3" and 5" accuracy models



Trimble

AS LOW AS
\$235⁰⁰
PER MONTH*

TRIMBLE® C5 MECHANICAL TOTAL STATION†

On a wide range of projects, in diverse settings across the globe, the Trimble® C5 is hard at work, quickly capturing accurate measurements and virtually eliminating downtime.

- Autofocus enabling precise and fast focus — Superior Nikon® optics give you crisp, bright sightings even in low light conditions
- Powerful, long-range EDM
- Available in 1", 2", 3" and 5" accuracies
- L2P security location technology
- Intuitive onboard software: Trimble® Access™
- Tough, durable and easy to use — lightweight and compact, facilitating ease of storage, transport and set up



AS LOW AS
\$89⁰⁰
PER MONTH*

NIKON® N & K MECHANICAL TOTAL STATIONS†

The Nikon® N & K total stations offer an advanced EDM in an innovative package, including flexible charging and connectivity options, and are backed by the great service and dealer support you expect from Nikon®.

- 2" and 5" angle accuracies
- Prism and reflectorless models
- Fast, accurate EDM
- Phone App for easy data transfer
- NFC simplifies Bluetooth pairing
- Power-up anywhere with the USB battery charger

MODEL	NIKON N 2"	NIKON N 5"	NIKON K 2"	NIKON K 5"
EDM MODE(S)	PRISM & REFLECTORLESS	PRISM & REFLECTORLESS	PRISM ONLY	PRISM ONLY
DISPLAYS	DUAL	SINGLE	DUAL	SINGLE
LASER POINTER	✓	✓		
IN-FIELD CHARGING	✓	✓	✓	✓
PHONE APP COMPATIBLE	✓	✓	✓	✓

† Pricing reflects Nikon K5 5"



LOW PRICE
\$4999⁰⁰

NIKON® NPL 322 MECHANICAL TOTAL STATION†

Using the same rechargeable long life Lithium-Ion battery is the Nivo series, combined with low power consumption design, the NPL-322+ provides the longest possible time in the field.

- 2" angle accuracy
- Prism and reflectorless measurements
- Fast, accurate EDM
- Easy-to-use keypad
- Rugged and lightweight

Price reflects model #NPL-322+ 2"P"

† The Trimble C3, C5 priced with a 3" accuracy.

*Call for custom quote, 1-833-834-3935.
Various financing options available.

GROUND-BREAKING SIGNAL MANAGEMENT AND RUGGED DURABILITY.

AS LOW AS
\$459⁰⁰

PER MONTH*
TRIMBLE® R12 GNSS RECEIVER



A high-performance solution for professional land surveyors that pushes the boundaries of what a GNSS receiver can do. Engineered for improved accuracy and productivity in challenging GNSS conditions. Powered by the all-new Trimble ProPoint™ GNSS engine, you can now collect data more accurately in challenging GNSS environments than was previously possible.

- Constellation agnostic, flexible signal tracking and improved positioning in challenging environments with Trimble ProPoint GNSS Technology
- Increased measurement productivity and traceability with Trimble SurePoint eBubble tilt compensation
- Advanced Trimble Custom Survey GNSS chips with 672 channels
- Reduced downtime due to loss of radio signal or cellular connectivity with Trimble xFill technology

AS LOW AS
\$509⁰⁰

PER MONTH*
TRIMBLE® R12i GNSS RECEIVER



With improved performance in challenging GNSS conditions and robust IMU-based tilt compensation that lets you forget about leveling the pole, you'll get more done faster than you thought possible

- Trimble® Inertial Platform™ (TIP) technology. Calibration-free and magnetically immune IMU-based tilt compensation for topo measurements and stakeout.
- Trimble ProPoint™ GNSS positioning engine. Engineered for improved accuracy and productivity in challenging GNSS conditions.
- 672-channel solution with Trimble 360 satellite tracking technology



TRIMBLE® R12i GNSS RECEIVER WITH TILT COMPENSATION TECHNOLOGY

RECEIVERS

INSTRUMENTS and FIELD HARDWARE

SPECTRA®
GEOSPATIAL

SPECTRA® RECEIVER BUNDLE

Spectra® SP60 GNSS Receiver

RELIABLE — ACCURATE — FLEXIBLE
The SP60 receiver provides the most reliable measurements and the highest possible accuracy under any conditions anywhere in the world. Combines the unique all-signals-tracking and processing Z-Blade GNSS-centric technology and L-band capability for satellite-delivered Trimble® RTX correction services.

- Z-Blade GNSS-centric technology
- 240-channel 6G ASIC
- Anti-theft technology
- Built-in long range Bluetooth
- Trimble® RTX correction services
- Rugged, impact-resistant housing

Origin Software

Survey and GIS data collection, calculation, mapping, storage, data management and much more all in one modern software package.

- Supports Spectra Geospatial Android and Windows devices
- Fully featured stakeout including points, lines, arcs and polylines
- Cloud connectivity for data transfer and communication between the field and office

This price includes SP60, Spectra Ranger 5 Data Collector, Origin Software, GPS pole, pole bracket, cradle, bipod, battery and charger.

PACKAGES AS LOW AS \$257⁰⁰ PER MONTH*



Spectra®
Origin Software



AS LOW AS
\$199⁰⁰
PER MONTH*

SPECTRA® SP85 GNSS RECEIVER

Uses the unique Z-Blade technology to track and process all available GNSS signals, to provide the most reliable measurements and the highest possible accuracies in challenging environments.

- WiFi, SMS and e-mail communication
- Anti-theft technology
- Backup RTK and RTK bridge
- Inside-the-rod antenna

Prices Subject to Change

*Subject to credit approval. Finance price based on a 60 month term. Financing underwritten by GreatAmerica Financial. One time origination fee of \$150 will apply



DATA COLLECTORS

INSTRUMENTS and FIELD HARDWARE



AS LOW AS
\$5245⁰⁰

TRIMBLE® TSC7 DATA COLLECTOR

Get the power of a tablet, laptop, Trimble Access field software and survey-rugged design all in one device.

- Large 7-in, sunlight-readable touch screen for finger or stylus
- Sunlight readable display
- Manage large project files, complex imagery, point clouds and other 3D data
- Front and rear-facing cameras

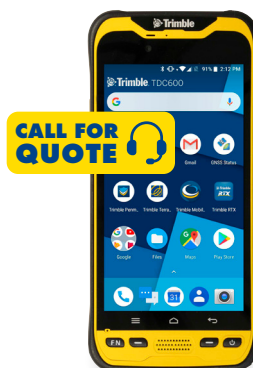


AS LOW AS
\$5245⁰⁰

TRIMBLE® TSC5 DATA COLLECTOR

Rugged yet lightweight, with all-day battery power, the Android-based TSC5 is easy to carry and allows for fast and efficient operation, even while wearing gloves. Trimble Access software makes it easy to collect precise field data.

- High resolution 13 MP camera
- Fast and powerful 2.2 GHz processor
- 4 GB memory and 64 GB storage



CALL FOR QUOTE

TRIMBLE® TDC600 DATA COLLECTOR

Designed for ease-of-use in a wide range of GIS and survey applications, this all-in-one rugged smartphone helps you collect and retrieve highly accurate spatial information while staying in touch with the office – all with 1 device.

- GNSS Accuracy: 1.5m
- 6-in high-resolution, sunlight-readable display
- Real-time positioning with built-in GNSS receiver



CALL FOR QUOTE

TRIMBLE® T100 TABLET

Feature-packed with industry-leading power delivery, the T100's large internal battery combined with fast charge capabilities means increased productivity and accuracy in the field.

- Fast and powerful Intel i5 processor to support demanding field applications
- All-weather touch control and Wacom EMR stylus
- Large 10.1-in touchscreen with maximum readability



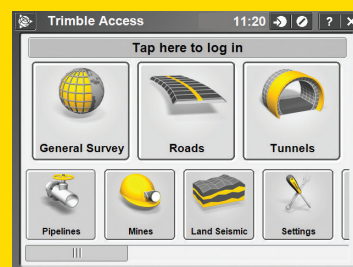
WHY TRIMBLE® ACCESS?

The Trimble Access software suite offers surveyors and geospatial professionals a range of specialized field applications designed to make fieldwork easier.

Whether you're a general surveyor or need a specialized application for surveying mines, tunnels or roads, there's a version of Trimble Access that's right for you. Features of Trimble Access Software include:

- Synchronization service that allows data to be shared instantly between the office and field, send job updates and receive updated project data
- Simple data management and less set up time required
- Seamless workflow between Trimble Access and Trimble Business Center
- Easy, intuitive interface that doesn't require an IT department to use

CALL FOR QUOTE



TRIMBLE® ACCESS™
SOFTWARE

AS LOW AS
\$142⁰⁰
PER MONTH*
**TRIMBLE®
T7 TABLET**



Featuring a powerful processor, the T7 is a fast, reliable field computer for surveyors and GIS workers. Easily capture data, visualize and manipulate maps and run office apps while on the jobsite with this rugged and compact device.

- Operating system: Windows 10
- Connect to Trimble S Series total stations and Trimble R Series GNSS receivers for a fully-integrated solution



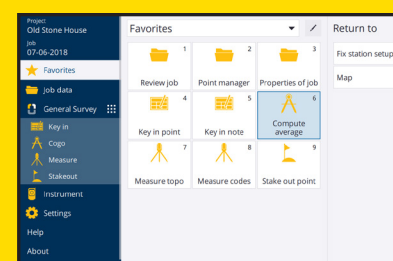
WHY SPECTRA® GEOSPATIAL ORIGIN?

Spectra Geospatial Origin field software gives surveyors what they need to tackle a full range of projects quickly and efficiently.

This software is compatible with Windows and Android operating systems and comes with a plethora of features including:

- Full support for a wide range of instruments, including mechanical and robotic instruments, and GNSS receivers
- Fully-featured stakeout including points, lines, arcs and polylines
- Advanced measurement tools like Measure codes for simple and fast topographic feature and attribute collection
- Cloud connectivity for data transfer and communication between the field and the office
- Integrated surveying technology that enables optical and GNSS workflows in the same job
- Modern map displays with support for DXF, LandXML, WMS, JPG and more
- Intuitive COGO directly in the map utilizing data in the job or related map files

CALL FOR QUOTE



SPECTRA®
ORIGIN SOFTWARE

DATA COLLECTORS



INSTRUMENTS and FIELD HARDWARE



AS LOW AS
\$4995⁰⁰

SPECTRA® RANGER 7 DATA COLLECTOR

The Ranger 7, with its sturdy and sunlight readable 7-in touch screen, full keypad and Windows® 10 Pro operating system, is built to hit the mark for surveyors requiring an easy-to-use, rugged, cost-effective data collector.

- 7-in multi-touch display - easier to see your data and operate
- Robot-ready with radio and SW
- Windows® 10 Professional operating system OS for professionals
- Available with Origin Field Software, Survey Pro and Layout Pro software. The right software for the job.

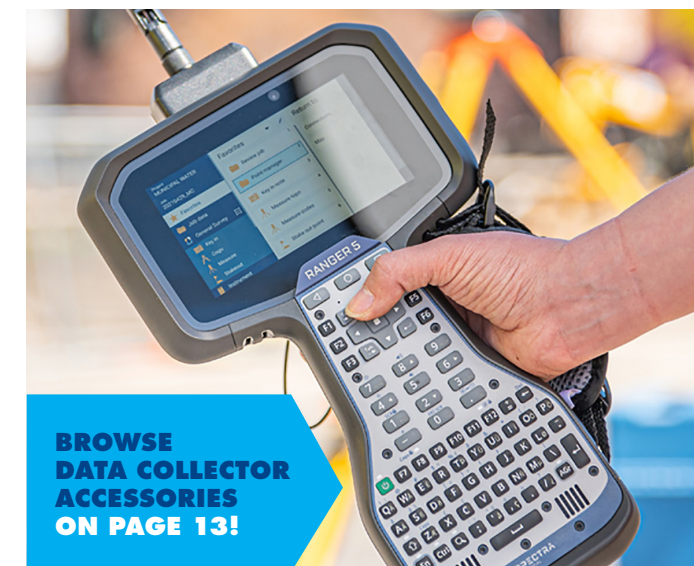


AS LOW AS
\$3995⁰⁰

SPECTRA® RANGER 5 DATA COLLECTOR

Fifth-generation Ranger designed to help you get every job done consistently, efficiently and accurately. Ergonomic design, lightweight and brightly-lit, anti-glare 5" landscape screen makes it easy to use in the field.

- Fast and powerful 2.2 GHz processor with 4GB memory and 64 GB onboard storage
- IP65 & MIL-STD-810H rugged protects against shock, dust and water



BROWSE
DATA COLLECTOR
ACCESSORIES
ON PAGE 13!

Prices Subject to Change

*Subject to credit approval. Finance price based on a 60 month term. Financing underwritten by GreatAmerica Financial. One time origination fee of \$150 will apply

GET OFF THE GROUND WITH DRONES FOR SURVEYING

As a surveyor, UAV systems, or unmanned aerial vehicle systems, are an easy add-on to your current offerings, allowing you to expand your business without having to add to your team.

For effective aerial surveying though, having the right equipment is a must, and not all drones are created equally. For the applications land surveyors use drones for, it's about total UAV systems complete with drone surveying equipment, software, workflow, training and support. Intuitive and integrated systems that are easy to use ensures that you're able to seamlessly add aerial surveying to your workflows and get off the ground immediately.

Applications for Professional Drones:

- ✓ Corridor mapping
- ✓ Contour mapping
- ✓ Digital Twin Creation & Maintenance
- ✓ Forestry
- ✓ Highway construction
- ✓ Construction site monitoring
- ✓ Leveling/Excavation
- ✓ Environmental changes & more

WHY USE DRONES FOR SURVEYING?

- Work efficiently and spend less time in the field collecting data.
- Stand out among competitors and keep up with customers' needs.
- Safely survey challenging terrain, crumbling structures, high locations and areas affected by natural disasters.
- Keep worksites going. No need to stop operations and shutdown equipment to collect data.
- Increase the number of services and deliverables you can provide to your clients.
- Slash post-processing times. Comprehensive software allows you to post-process data in a fraction of the time.



NEW PRODUCT

MICRODRONES® mdLIDAR 1000L

Cover more ground from above with longer range. This translates to more efficiency than ever - the survey equipment, software, workflow, training and support that you need to be productive in the field. Designed for professionals responsible for geospatial data collection.

- ✓ Fully integrated high resolution LiDAR & camera to efficiently scan up to a 90 degree field of view
- ✓ Easy remote-free tablet flight execution
- ✓ Takeoff weight 6400g
- ✓ Horizontal photogrammetry 2-3 pixels
- ✓ Vertical photogrammetry 3-5 pixels

Package includes: Aircraft, payload, 3 batteries, 1 year unlimited data processing, 1 year support, 5 days of training



PACKAGES AS LOW AS \$3206⁰⁰ PER MONTH*

CALL FOR QUOTE



MICRODRONES® mdCOCKPIT APP

Plan, monitor, adjust, analyze and control your missions right from your tablet. mdCockpit was designed for professional drone users to manage flights right at their fingertips.

CALL FOR QUOTE



MICRODRONES® mdINFINITY SOFTWARE

mdInfinity is a powerful ecosystem that enables you to quickly and efficiently process geospatial data, including Trajectory Processing, Georeferencing, Precision Enhancement and Boresight Calibration. Take advantage of Microdrones with a variety of flexible ways to pay.

CALL FOR QUOTE



QUANTUM-SYSTEMS® TRINITY F90+

An eVTOL fixed-wing UAS that unites the convenient handling of a multi-rotor drone and the efficient aerodynamics of an airplane into one system.

- Wide range of high precision sensors, e.g. dual RGB & NDVI payload and 42 MP HighRes RGB
- PPK including Quantum-System iBase ground reference station powered by u-blox
- Live Air Traffic (ADS-B) inc. QBase 3D Mission Planning
- 2.4 GHz telemetry with up to 7 km command & control range

QUANTUM-SYSTEMS® QBASE 3D

The most convenient platform to plan aerial survey missions with Quantum-Systems UAS. It automatically generates flight paths after the observation areas and the mission parameters have been defined with just a few clicks. This allows the operator to be up and flying within no time. After mission completion, QBase 3D enables processing of the captured images, precision enhancement with the built-in PPK solution and export of all metadata to file formats suitable for a variety of platforms for further post-processing.

CALL FOR QUOTE



Prices Subject to Change

*Subject to credit approval. Finance price based on a 60 month term. Financing underwritten by GreatAmerica Financial. One time origination fee of \$150 will apply



CONSTRUCTION LASERS AND LEVELS



CONSTRUCTION LASERS AND LEVELS

INSTRUMENTS and FIELD HARDWARE

INSTRUMENTS and FIELD HARDWARE



ACCURATE SLOPE PERCENTAGES

LOW PRICE



\$1978⁰⁰

SPECTRA®
PRECISION GL412N
GRADE LASER

- ✓ Automatic horizontal and vertical self-leveling
- ✓ Accuracy 1.5mm @ 30 m (1/16" @ 100')
- ✓ Working range of 800 m (2,600') diameter
- ✓ "Fingerprint" function of the HL760 DRO receiver only accepts the beam from the laser it is paired with
- ✓ Selection of Sensitivity - accurate even in high winds or on high vibration job sites



Trimble.

AS LOW AS
\$107⁰⁰
PER MONTH*

TRIMBLE® DINI® LEVEL

The Dini® is a digital height measurement sensor from Trimble's Integrated Surveying portfolio of products.

ONE-MAN OPERATION

\$525⁰⁰

SPECTRA® CR700
COMBINATION
LASER RECEIVER

- Remote display
- Vertical drift alarm
- Machine-mounted display receiver

ONE-MAN OPERATION

\$1650⁰⁰

SPECTRA® LR50
LASER MACHINE
DISPLAY RECEIVER

- Built-in Blade Tilt and Excavator Boom Plumb Indicator
- Versatile 360-degree laser reception
- 3 accuracies to choose from

ONE-MAN OPERATION

\$1228⁰⁰

SPECTRA® LR30
LASER MACHINE
DISPLAY RECEIVER

- 3 accuracies to choose from
- Rugged and waterproof
- Full 360-degree reception picks up the beam from all directions



BEST TOOL FOR THE JOB

\$4375⁰⁰

SPECTRA®
DG613 PIPE LASER

- Large, graphical user interface makes the screen easier to see and use when in or out of the pipe. Same graphical user interface can be seen on the remote
- Self leveling range of -12% to +40% over the entire grade range
- Cross axis compensation
- Bright visible beam that works up to 500-ft(150m)



BEST TOOL FOR THE JOB

\$1295⁰⁰

SPECTRA®
THEODOLITE
DET-2 SERIES
#DET-2

- 2" angular accuracy — accurate enough for any construction job
- Vertical axis compensation - tilt sensor provides the highest level of accuracy
- Dual LCD with large characters - easy to see angle readings eliminate errors
- Simple six-button keypad
- Large suite of programmable settings



LOW PRICE

\$625⁰⁰

SPECTRA®
LL100N LASER LEVEL

- Automatic self-leveling increases productivity with fast setups and minimal training
- One person elevation control up to 575-ft (175m) away increases productivity
- Durable construction can withstand tough jobsite conditions



BEST TOOL FOR THE JOB

\$867⁹⁵

SPECTRA®
LL300N LASER LEVEL

- Increases productivity with fast setups, fewer mechanical parts and automatic self-leveling
- Durable design reduces downtime due to drops and tripod tip overs
- Comes standard with HL450 digital readout receiver



STARTING
AS LOW AS
\$394⁹⁵

SPECTRA®
LT52R/LT52G
POINT AND LINE LASER

- Combines a 5-beam pointer and a crossline laser into one product
- Automatic self-leveling assures accuracy and fast setup
- Easy viewing in all conditions – points are visible up to 200-ft (60m)
- Wide 210 degree horizontal line intersects side points; vertical up beam intersects up point



STARTING
AS LOW AS
\$528⁹⁵

SPECTRA®
LT56 RUGGED
UNIVERSAL LASER LAYOUT TOOL

- Provides (3) 360 degree planes of laser light. A horizontal plane and 2 vertical planes 90 degrees apart
- Lithium-Ion batteries provide 25 hour operating time — huge savings on battery cost compared to alkaline models and are environmentally friendly
- Rugged and durable - 3-ft (1m) drop specification
- Versatile mounting accessory — includes ceiling track, magnetic and tripod mounts with rotation and fine vertical adjustment



NIKON® AUTOLEVELS

Deliver a high level of accuracy and ease of use for a variety of civil engineering and construction applications.

- Compact and lightweight, they are also built rugged and water resistant.
- Nikon's world-renowned optics provide brighter, clearer images.
- Attaches quickly to flat or domed head tripods.



AC-2S

MODEL #	MAGNIFICATION	PRICE
AX-2S	20X	\$315.00
AC-2S	24X	\$328.00
AP-8	28X	\$564.00
AE-7	30X	\$1085.00



LOW PRICE

\$1018⁰⁰

DAVID WHITE
LT8-300P TRANSIT

#46-D8871

- Sharp 26x optic with stadia reticle
- Proven "2-point" level lock design
- Built-in optical plummet or laser eliminates need for plumb bob
- Rugged all-metal construction
- Accuracy of +/- 1/16 at 100-ft



LOW PRICE

\$1098⁰⁰

DAVID WHITE LT8-300LTU TRANSIT

#46-D8879

- 360° telescope rotation allows you to see directly below the instrument for pipe laying applications
- 26x optic magnification
- Up to 400-ft range
- +/- 3/16-in at 150-ft leveling accuracy
- Ruggedness and dependability, great for every horizontal and vertical sighting application in construction

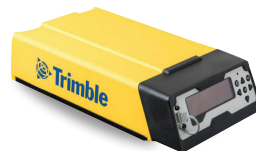


MONITORING

Duncan-Parnell offers a suite of Monitoring solutions for your next monitoring project



CALL FOR QUOTE



TRIMBLE® SX12 ROBOT SCANNER

Trimble VISION high-res camera system easily captures monitoring targets and site conditions while robust Trimble MagDrive servo allows the device to withstand tough conditions.

CALL FOR QUOTE



TRIMBLE® GEOTECHNICAL SENSORS

Get fully automated wireless monitoring solutions that help minimize field visits and increase on-site safety to obtain manual readouts - all powered by Worldsensing.

CALL FOR QUOTE

TRIMBLE® 4D CONTROL

Provides analysis and management tools, from post-processed deformation monitoring campaigns all the way to real-time systems that manage your projects and alert the operator of significant motion events.

- Supports Syscom vibration monitors and Vaisala weather stations
- Manage your system and view results from remote locations
- Measure, analyze, visualize and report on your monitoring projects

TRIMBLE® R750 MODULAR GNSS RECEIVER

Built-in cellular modem ideal for monitoring projects.

- 8 mm H/15 mm V RTK precision
- 336 Channels



TRIMBLE® SETUP M1 TOTAL STATION CONTROLLER

Remotely manage and control Trimble Total Stations anytime, from anywhere.

- Continuous data collection and storage even when internet connection is disrupted
- Simple central server connection with free IST Connect Cloud Service subscription

CALL FOR QUOTE



CALL FOR QUOTE



CONSIDERING MONITORING? LET DUNCAN-PARNELL HELP

Providing expertise, partnership and technology to grow your monitoring business.

Wide array of the latest technology – With instruments like our robotic total stations, scanners, sensors and other accessories, we've got a package to suit any monitoring project and budget.

Trimble commitment – Our strategic partner, Trimble, has placed a new emphasis on monitoring as evidenced by improvement to Trimble 4D software and the TBC monitoring module.

Dedicated resources – With an in-house expert with 30 years of technical knowledge and expertise specifically on monitoring and mobile mapping, we're ready to guide, teach and assist you with your project needs.

RENT AN AUTOMATED TOTAL STATION FOR MONITORING

Including Trimble S7, Setup M1, enclosure, and cover



AS LITTLE AS
\$3633⁰⁰
PER MONTH*

Contact us at **1-833-834-3935** or visit **www.duncan-parnell.com**



STREAMLINE AND SIMPLIFY YOUR IMAGING TASKS WITH TRIMBLE MOBILE MAPPING

Do more with fewer resources by taking advantage of state-of-the-art Mobile Mapping Solutions from Trimble.

Trimble Mobile Mapping Solutions provide you with easy-to-use vehicle-mounted data capture systems together with a complete field-to-finish workflow that will help you get your project done in record time.

Whether your interest is in capturing immersive imagery to create a mapping based street view application or you are looking to undertake precise survey and engineering projects, Trimble has a mobile mapping solution for you. With Trimble Mobile Mapping Solutions, you get:

- Fast deployment, data capture and analysis
- Highly efficient, proven analysis workflows
- Versatile, operational flexibility
- Outstanding performance and low cost of ownership
- Field to finish, complete workflows

MOBILE MAPPING



TRIMBLE® MX7



The MX7 is a mobile imaging rover that offers the advantage of vehicle-mounted functionality. The MX7 enables you to observe and capture your jobsite and then use Trimble software to create deliverables for transmission to your office.

- Durable lightweight design
- Low power consumption for long-lasting, cost-effective performance
- Ideal for managing assets like bridges, power stations, roads and buildings

AS LOW AS
\$3066⁰⁰
PER MONTH**

TRIMBLE® MX50

The MX50 is a practical field-to-finish mobile mapping solution for asset management, mapping and road maintenance. The system delivers a very accurate point cloud of the environment along with complementary immersive imagery providing substantial gains in productivity.

- Combines precise LiDAR data and immersive panoramic imagery
- Accurate point cloud for applications like road surfaces, highway maintenance or asset management
- Complete field-to-finish workflow: capture, process, extract and share

CALL FOR QUOTE



TRIMBLE® MX9

The MX9 is an innovative mobile mapping system designed for large-scale scanning and mapping missions. The MX9 typically mounts on the roof of a vehicle and rapidly captures laser scans and images - both panoramic and multi-angle - as you drive.

- State of the art Trimble GNSS and Inertial technology
- Very high point cloud density and immersive imagery
- Ideal for road and rail assets; telecommunication asset inventories; elevation models; volumetric analyses; 3D city models and as-built surveys

CALL FOR QUOTE



Prices Subject to Change

*Subject to credit approval. Finance price based on a 60 month term. Financing underwritten by GreatAmerica Financial. One time origination fee of \$150 will apply**Includes hardware and recommended software

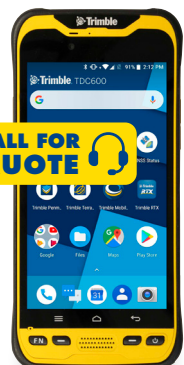


MAPPING/GIS



TRIMBLE® TDC600 HANDHELD

The TDC600 handheld is a sleek, all-in-one rugged smartphone with a built-in professional GNSS receiver. Designed for a wide range of GIS applications, the TDC600 helps you collect and retrieve highly accurate spatial information while staying in touch with the office.



- All-in-one GNSS data collector and smartphone
- 6-inch high resolution sun light-readable display
- Real-time positioning with built-in GNSS receiver



SPECTRA® SP20

The SP20 handheld GNSS receiver combines innovative, camera-enabled data collection workflow with a high level of performance in an ergonomic, scalable solution (from meter to cm accuracy). Rugged and lightweight, the SP20 is easy-to-use and highly accurate. It is the optimal tool not only for cadastral, construction or topo surveys, but also for a range of GIS projects.

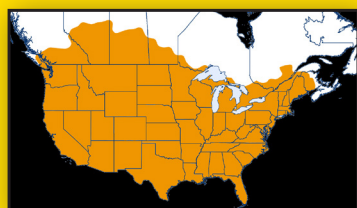


- The 5.3-in screen delivers vivid visuals of the workflow, which enables precise 2D handheld logging.
- High degree of accuracy can be enhanced with a monopole accessory to deliver solid, survey-grade 3D measurements.
- Scalable accuracy from meter to cm (meter, submeter (30/30), dm (7/2), cm).
- 240 GNSS channels

AS LOW AS
\$105⁰⁰
PER MONTH*

TRIMBLE® RTX SERVICES

Trimble RTX is a family of real-time GNSS positioning services available via IP/cellular or satellite delivery worldwide. Suitable for all industries, it gives you next-level accuracy and maximizes your workflow with the freedom to work anywhere. Ask your Duncan-Parnell GIS representative about the benefits of RTX.



TRIMBLE® TDC600 BUNDLE

Trimble® TDC600

The TDC600 handheld is a sleek, all-in-one rugged smartphone with a built-in professional GNSS receiver. Designed for a wide range of GIS applications, the TDC600 helps you collect and retrieve highly accurate spatial information while staying in touch with the office.

Catalyst

Catalyst transforms Trimble®'s core GNSS technology into a subscription-based software service for your mobile device. Plug the Catalyst Antenna into your Android™ phone or tablet's USB port, download Catalyst enabled apps (purchased separately) and get the accuracy you need, when you need it.

PACKAGES
AS LOW AS
\$350⁰⁰
PER MONTH*

TerraFlex
Software



TRIMBLE® TDC150 HANDHELD

The TDC150 GNSS handheld receiver is built for GIS users who demand maximum productivity and positioning accuracy out on the job. A fully integrated, ultra-rugged solution that has the flexibility of a handheld, an Android-based user interface, and scalable high accuracy positioning.



- Integrated high-accuracy GNSS receiver
- Scalable positioning accuracy from meter to centimeters
- 5.3-inch sunlight readable multi-touch capacitive screen



TRIMBLE® DA2 GNSS RECEIVER

The Trimble DA2 GNSS receiver is the next generation receiver for the Trimble® Catalyst™ GNSS positioning service. The DA2's performance scales with your Trimble Catalyst service subscription to deliver anywhere from centimeter to sub-meter precision to location-enabled Android™ and iOS field apps & workflows.

Prices Subject to Change

*Subject to credit approval. Finance price based on a 60 month term. Financing underwritten by GreatAmerica Financial. One time origination fee of \$150 will apply



PRE-OWNED, DEMO INSTRUMENTS

We understand that businesses come in different sizes and with different budgets. Sometimes you don't need a brand new piece of equipment, and a used version can do just fine for a project or to help round out your instrument portfolio.

- A wide selection of the latest technology
- Economical: Buying is a big deal and saving money is a factor.
- Reliable: Certified, Pre-Owned — Inspected, Cleaned, Calibrated
- Ask us about our optional extended warranty



Contact us at 1-833-834-3935

Call for our latest inventory. Available used equipment and pricing subject to change.

TYPES OF INSTRUMENTS WE OFFER:



OTHER BRANDS WE CARRY:





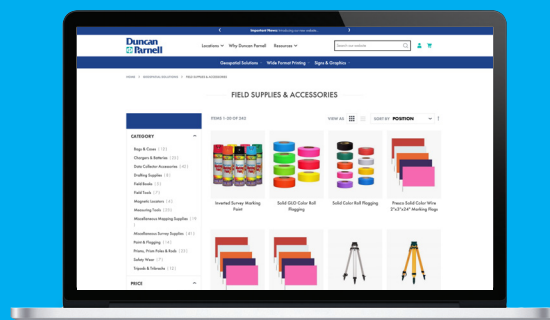
900 South McDowell St.
Charlotte, NC 28204

\$20 OFF
your next supplies
order of \$150 or more!*

Scan the QR code below
to get your offer!



*Exclusions apply, offer valid through July 31, 2022,
scan code and visit website for details



**SHOP FIELD
EQUIPMENT AND
SUPPLIES ON OUR
ALL NEW WEBSITE**



Contact us at **1-833-834-3935** or visit **www.duncan-parnell.com**