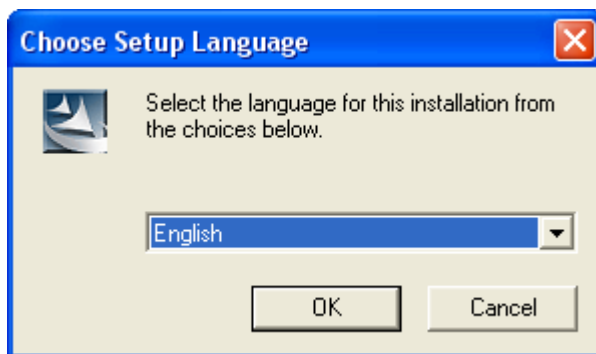


Updating the Data Transfer Utility

When new versions of Trimble Survey and Mapping field software are released you may experience a problem transferring files between your field device and your office software.

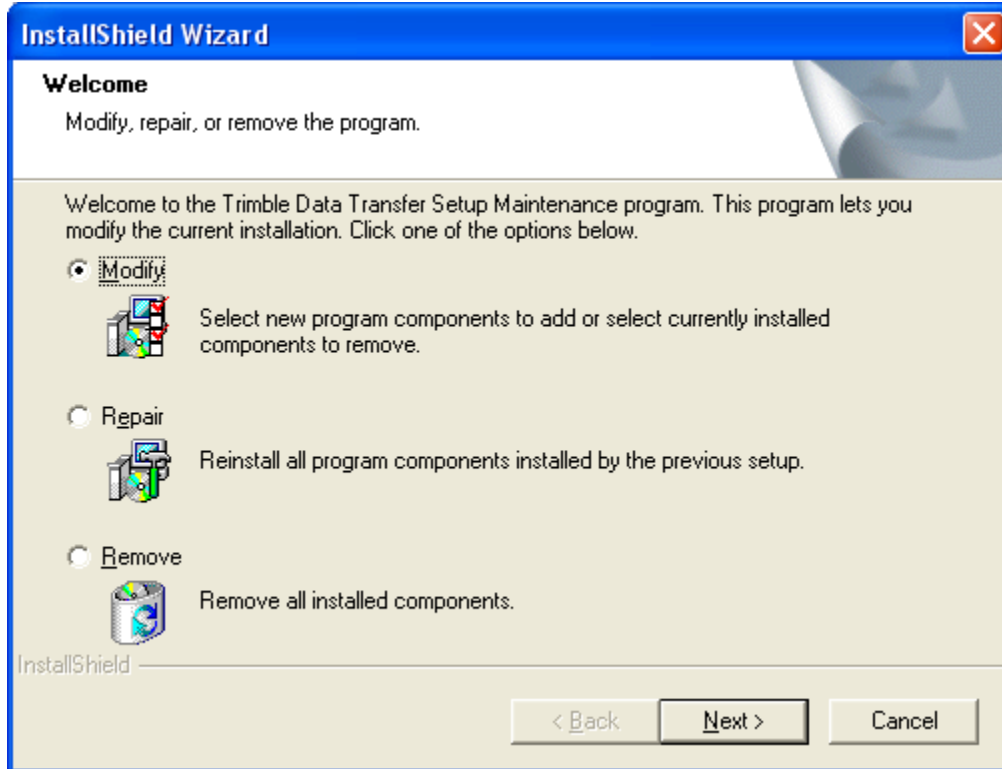
To eliminate problems transferring files between your field device and your office software you will need to update the Data Transfer Utility. Below are the steps to properly update the Data Transfer Utility.

1. Download and install the latest version of Data Transfer Utility from <http://www.trimble.com/datatransfer.shtml>.
2. Choose the Language for installation.



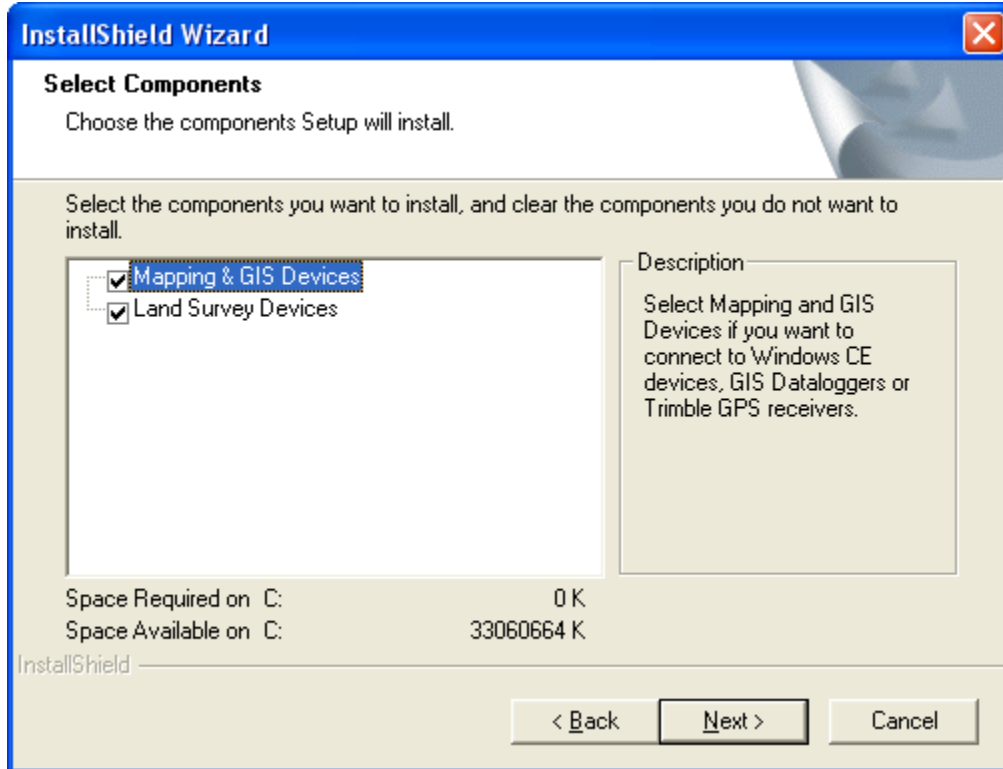
3. Click on OK.

4. Select Modify.

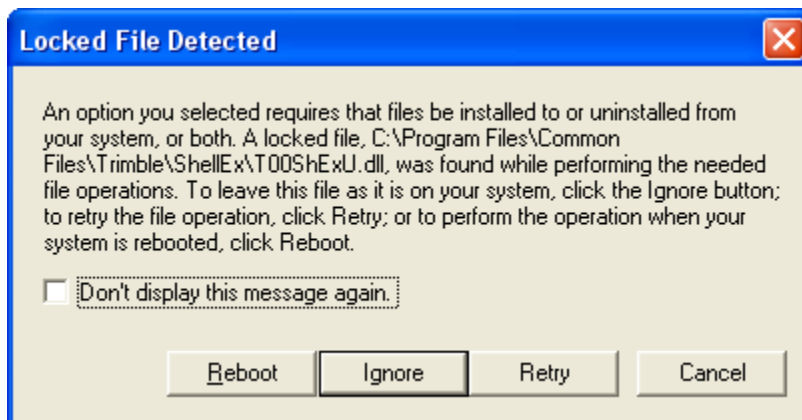


5. Click on Next.

6. Select the appropriate devices by clicking on the check boxes.



7. Click on Next.
8. You may get the following message during the install.



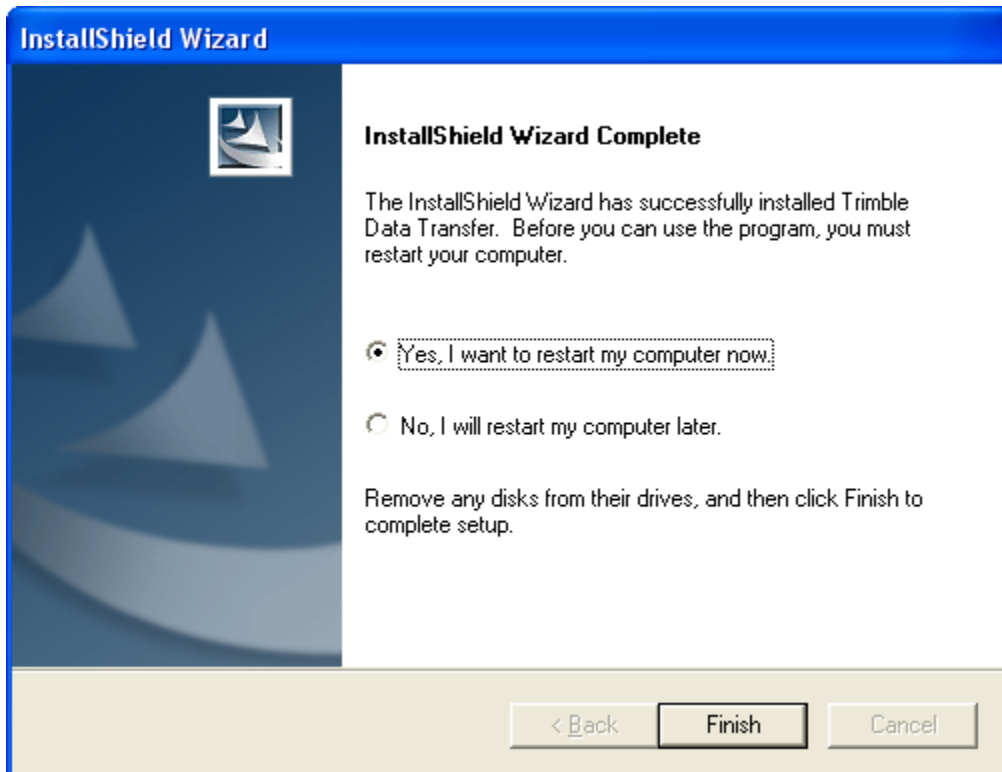
9. Click on Reboot on each Locked File Detected message.

After Data Transfer has been installed you will see the following screen.



10. Click Continue Anyway to install the Universal Serial Bus controllers.

11. At the end of installing Data Transfer you will be prompted to reboot your computer.



12. Select on Yes, I want to restart my computer now and then click on Finish.