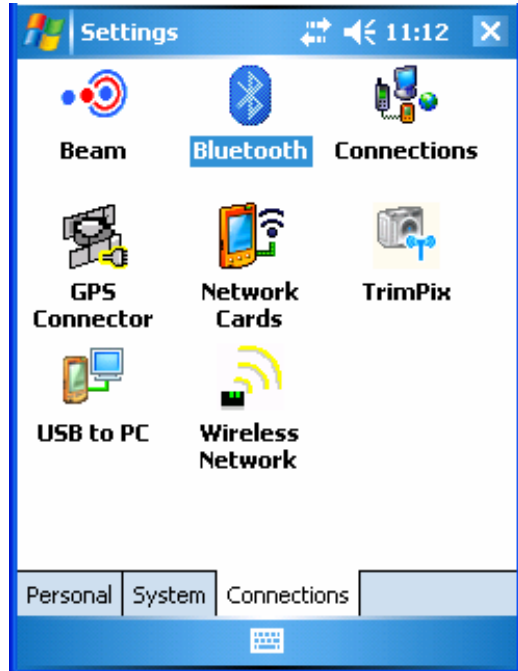


## LaserCraft Bluetooth setup for Mobile 2005

### Laser Bluetooth Connections Steps

#### Settings, Connections, Bluetooth



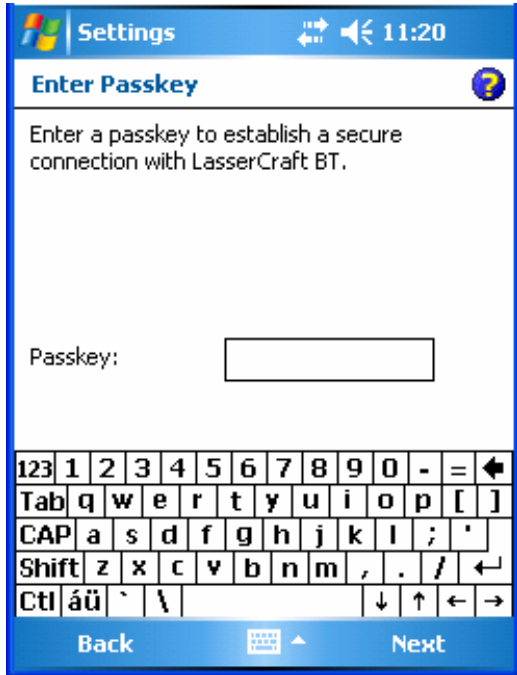
Scan for new devices



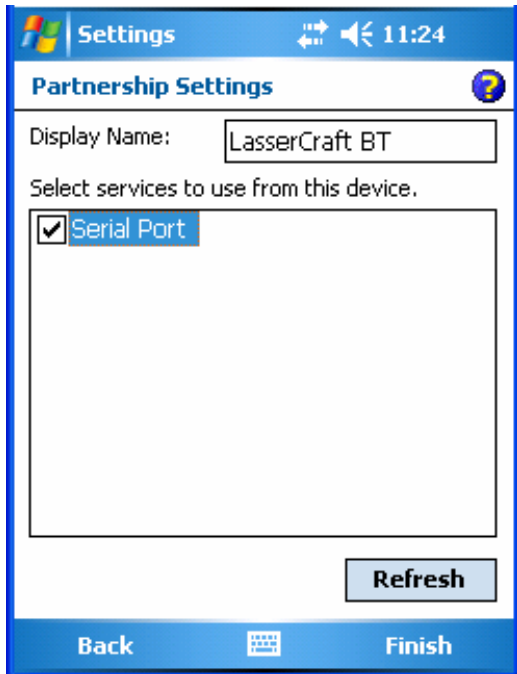
Select Laser from list, tap Next



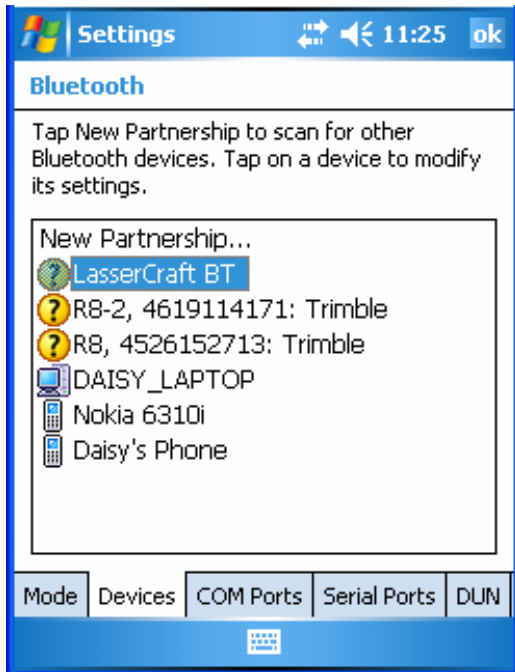
If add a passkey comes up, do not enter a passkey. Tap Next. If Next is grayed out, enter “1234” as the passkey or check your owners manual for appropriate passkey.



Select Serial Port, then tap Finish



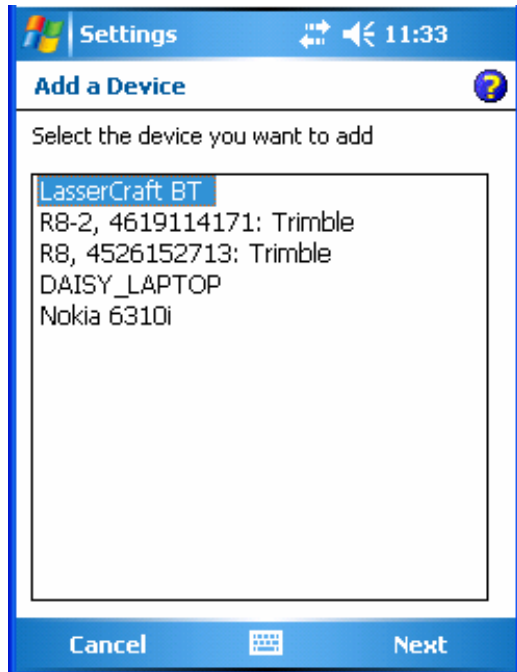
Your device should now be in your list



On COM port page, select "New Outgoing Port"

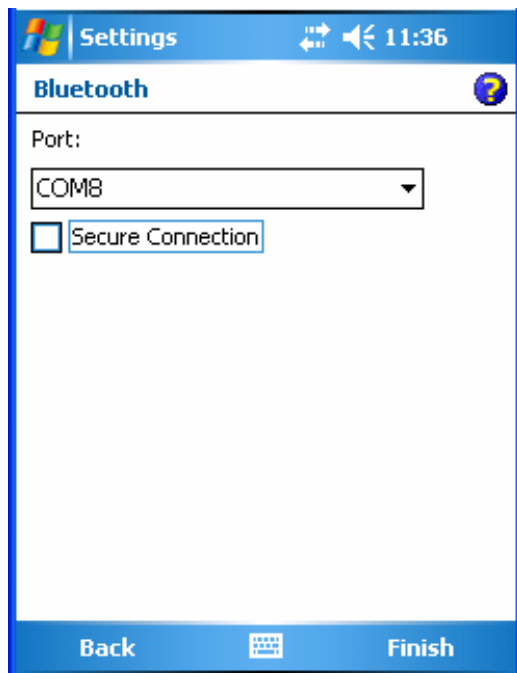


Select the Laser as the device you want to add. Tap Next.



Choose a COM port.

UNCHECK SECURE MODE



Tap Finish

You should now see your laser in your list.

