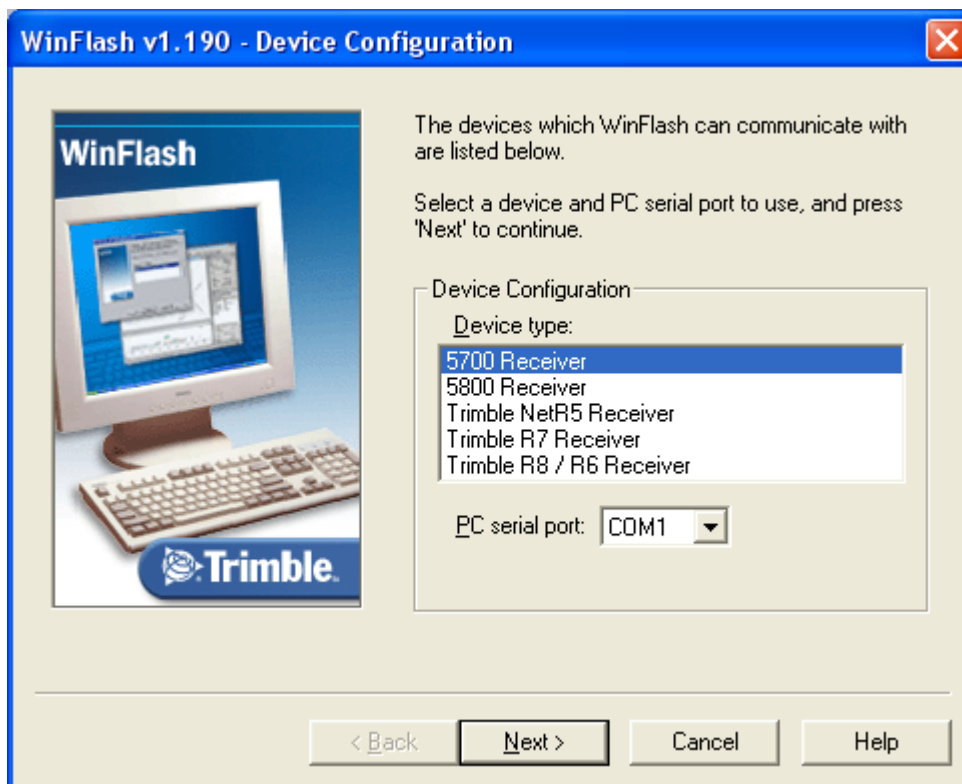


How to Upgrade Firmware in a Trimble Survey Receiver

To update your firmware in a Trimble Survey receiver you will first need to go and download the firmware for your receiver at http://www.trimble.com/trimbler6_ts.asp?Nav=Collection-44386.

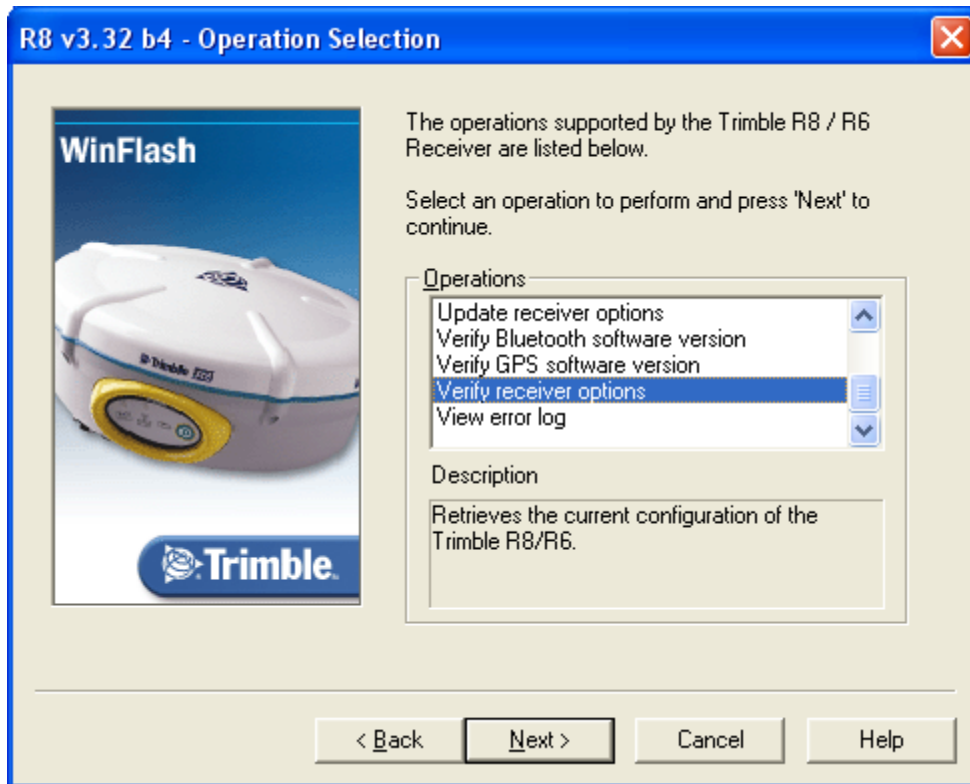
1. Find your receiver type and then click on the link to the Trimble support site.
2. At the Trimble support site click on downloads.
3. Find the firmware you wish to download and install on your receiver.
4. Click on the link to save the file to your computer. **Note:** Remember where you save this file.
5. After the file has downloaded find the file and double-click on it to install. This will install a program on your computer called WinFlash.
6. Cable your receiver to your computer.
7. Turn on your receiver.
8. After you have installed WinFlash click on Start/Programs/WinFlash/WinFlash.



9. Select your receiver from the list.
10. Verify your PC serial port is correct.
11. Click on Next.

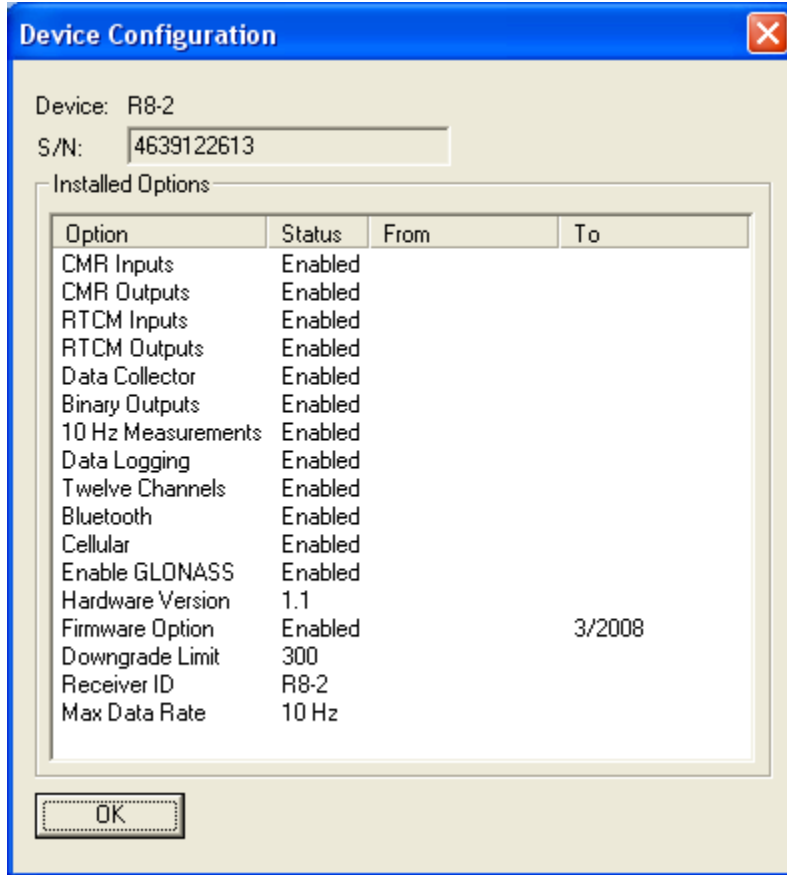
Verifying Firmware Expiration Date in a Receiver

1. The first item that is suggested is to verify that your receiver is able to receive the latest firmware.



2. Scroll down and Click on Verify receiver options.
3. Click Next.
4. Click on Finish.

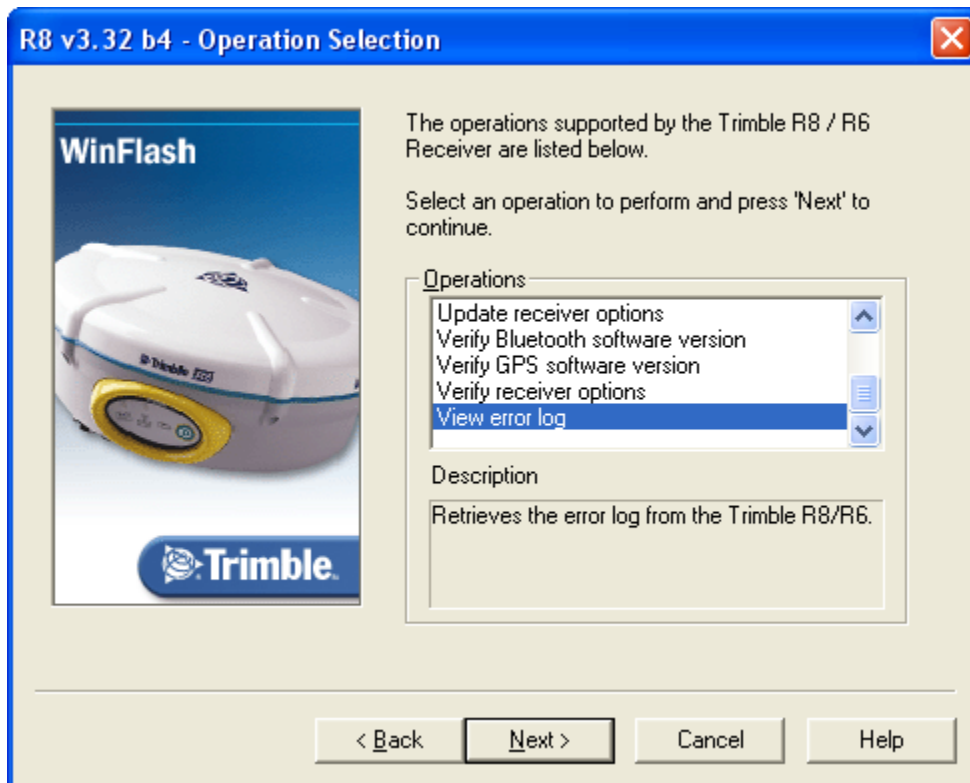
5. Look under Firmware Option to see when your Firmware Expires.



6. Click on OK.
7. Click on Menu.

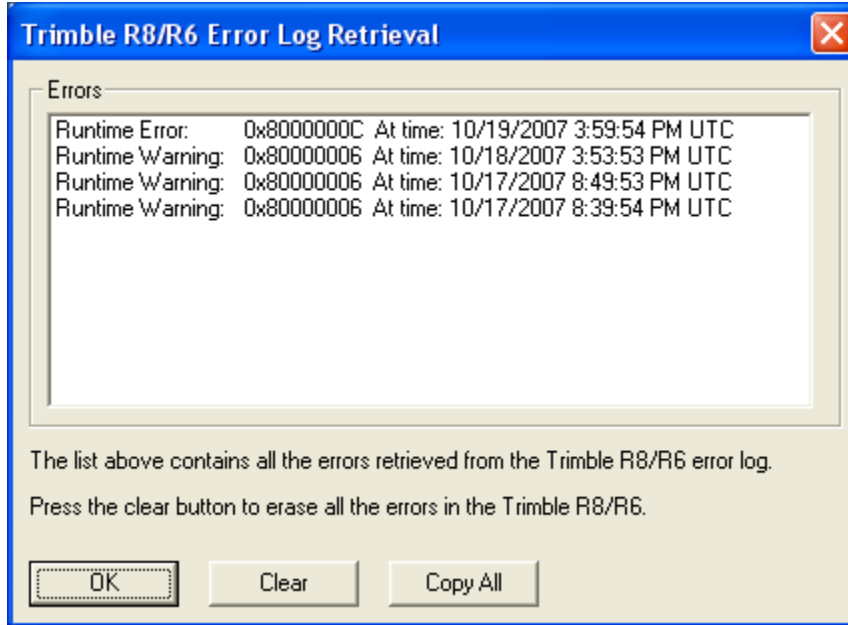
Viewing and Clearing the Error Log in a Receiver

1. The next suggested item would be to view and clear the Error Log in your receiver.

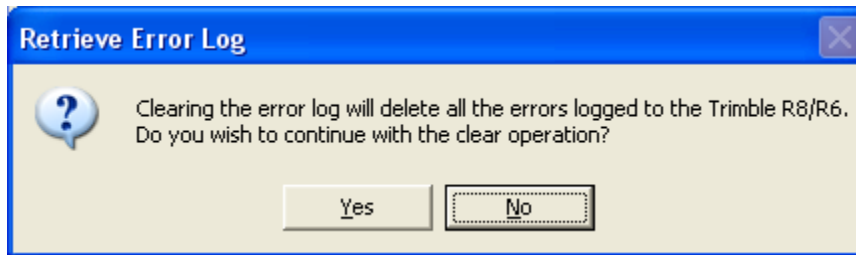


2. Scroll down and Click on View error log.
3. Click Next.
4. Click on Finish.

5. We have errors in our receiver. Click on Clear to clear the error log.



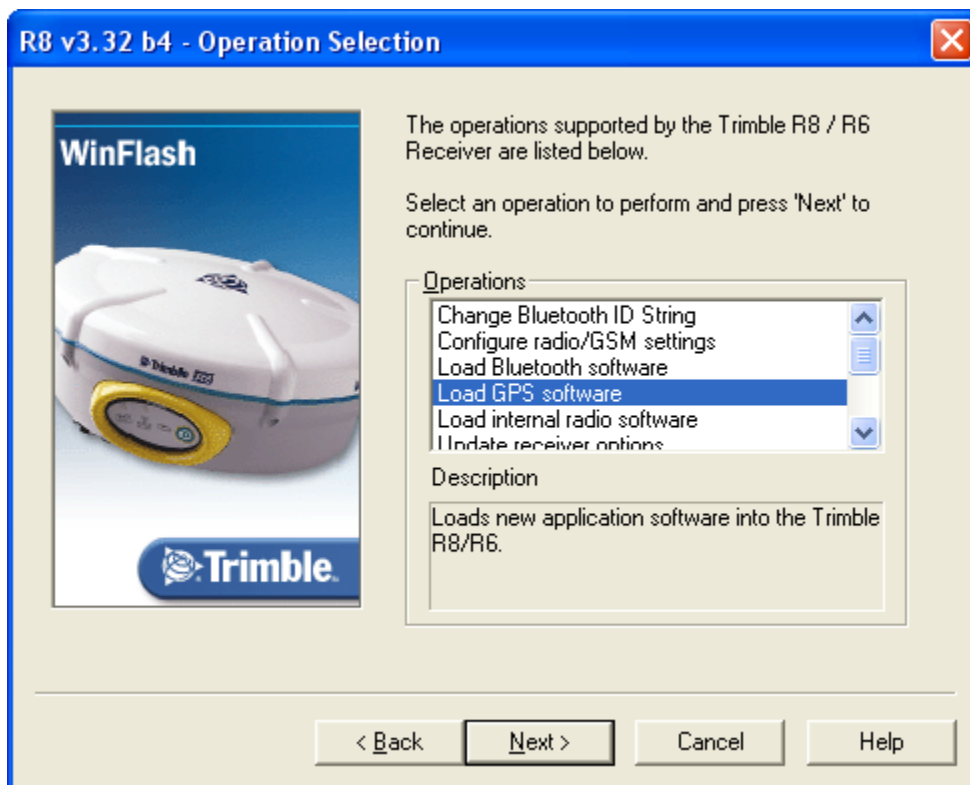
6. Click on Yes.



7. Click on OK.
8. Click on Menu.

Loading Firmware in a Receiver

1. The final step is to load the firmware into the receiver.



2. Click on Load GPS Software.
3. Click Next.
4. Click on the Firmware you wish to load into the receiver.



5. Click on Next.
6. Click on Finish.
7. Click on Exit.