

Creating a Bluetooth Connection between a ProXRS and a Recon with TerraSync

The Parani SD200L is a Bluetooth device that will allow users to connect wirelessly between a Pathfinder ProXRS Receiver and a Recon or Ranger device. It can be purchased from www.sena.com. Also, you will need to purchase a male/male null modem adaptor to make the connection between the ProXRS and the Parani SD200L device.

The steps to properly configure the Parani SD200L to work with a Trimble Recon or Ranger are:

1. Install the ParaniWin software on your PC. This is included with the CD that came with the Parani SD200L or can be downloaded from <http://www.sena.com/support/downloads/>.
2. On the Parani SD200L device make sure the dip switches are set to S/W Config and Hardware Flow Control Handshaking is set to No Use.

Table 3-4 Baud rate Settings by Dipswitches











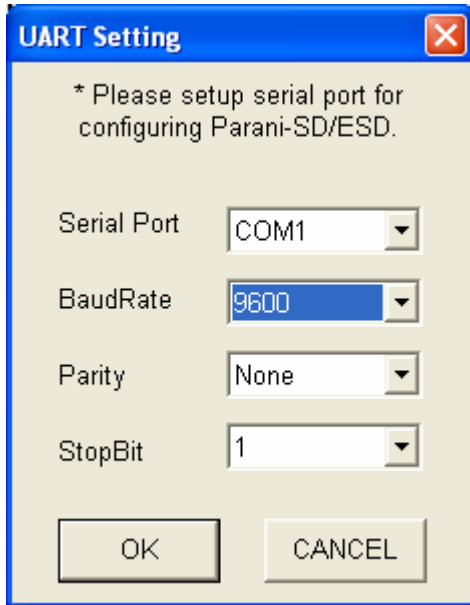
Baud rate	2400	4800	9600	19.2K	38.4K	57.6K	115.2K	S/W Config
								

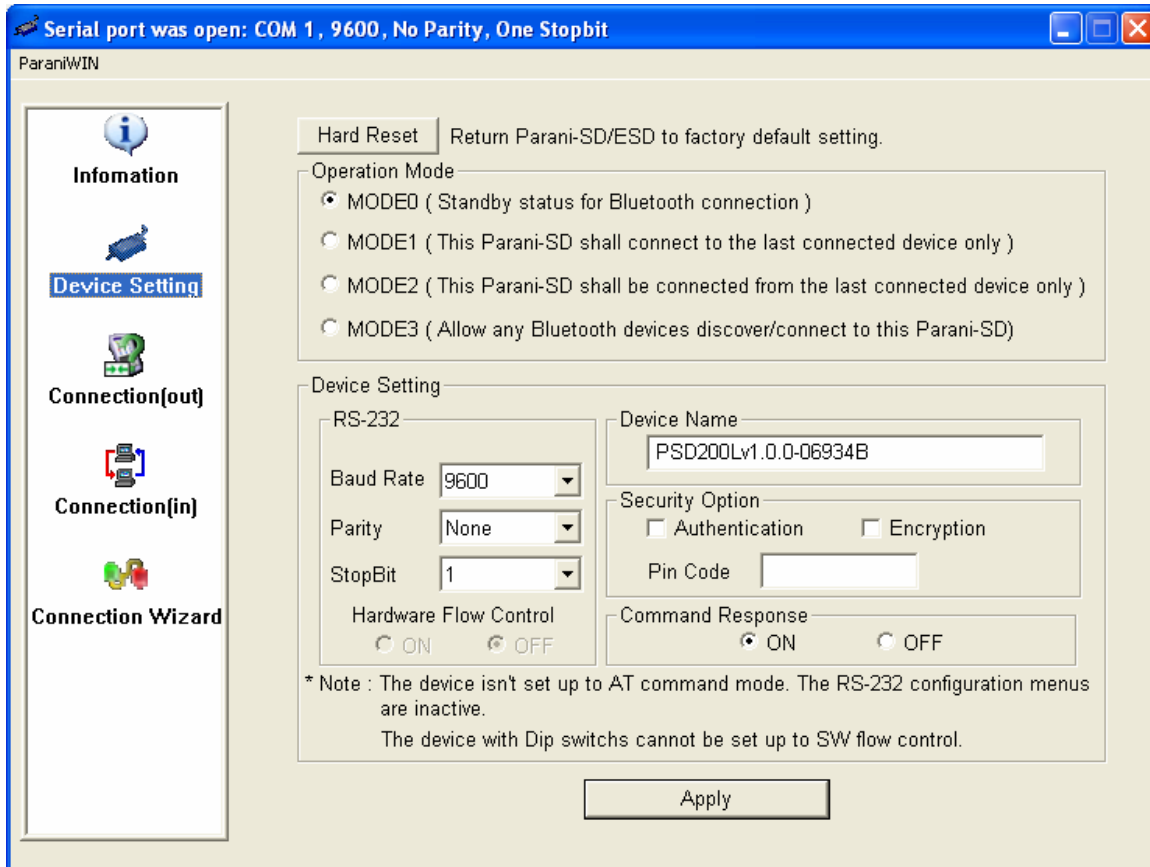
Table 3-5 Hardware Flow Control Settings by Dipswitches

Hardware Flow Control Handshaking	No Use	Use
		

3. Make the connection to the Parani SD200L device using the default connection shown below. Note: Make sure you turn on the ParaniSD200L.

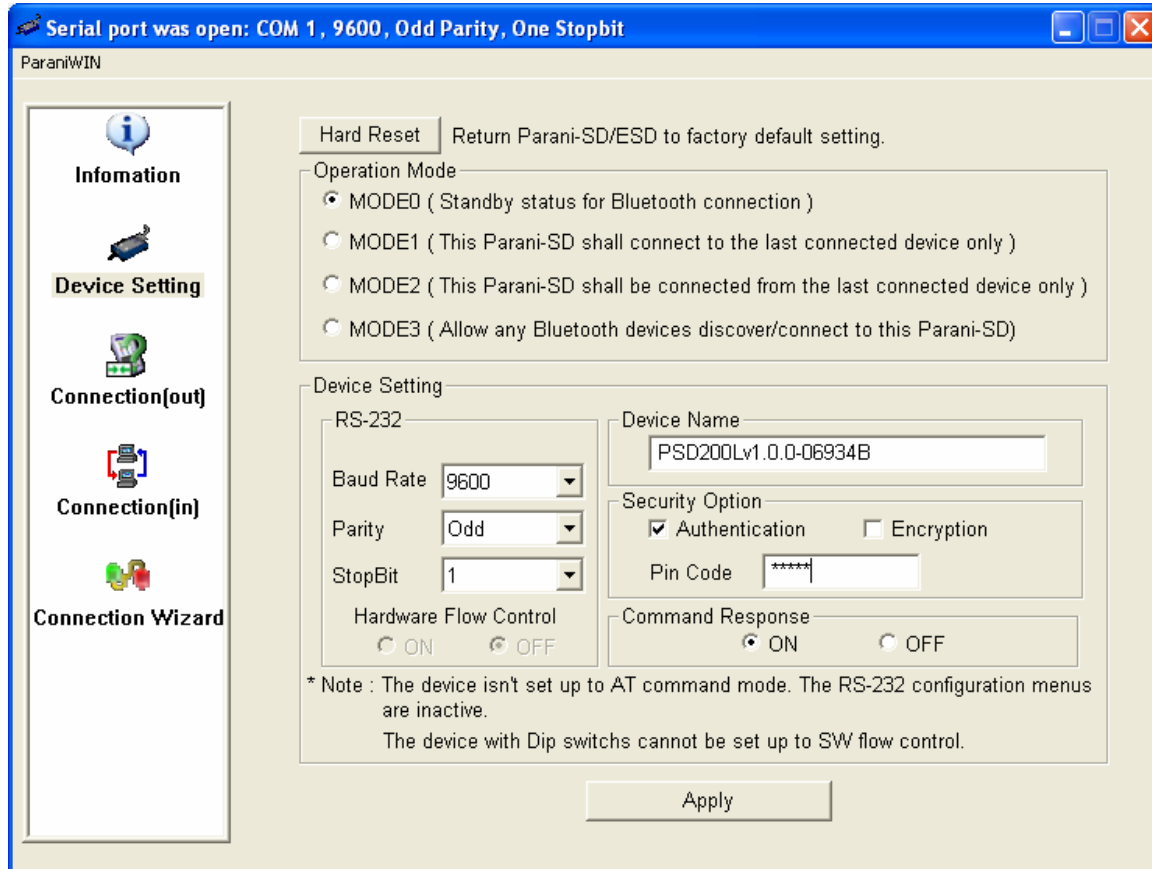


4. On the left side of the screen click on Device Setting.



5. For RS-232 change the parity to Odd and check Authentication for Security Option.

After checking Authentication enter a PIN Code of 0000 and click apply.



6. After you have clicked Apply click on OK for the Completed configuration window.

7. Close the ParanWin software and disconnect the device from the computer.

8. Connect the male/male null modem adaptor to PN 30231 which is connected into Port B on the Pathfinder ProXRS.

9. Connect the Parani SD200L to the male/male null modem adaptor. Note: If you have batteries connected to the ProXRS the receiver will turn on automatically. You do not need the unattended base station cable PN 32247.

10. Turn on the Recon and tap on Start/Setting and the Connections Tab at the bottom of the screen.

11. Tap on the Bluetooth Icon.
12. Turn on Bluetooth by check the box.
13. Tap on the Devices tab at the bottom of the screen.
14. On the Parani Device press the enable button for two to three seconds and then tap on New Partnership on the Recon.
15. On the Recon you will see Parani identified at PSD200L.
16. Tap on PSD200L to highlight it and then tap next at the bottom right of the screen.
17. Enter 0000 for the passkey and tap next.
18. Enable the Serial Port check box and tap Finish.
19. Tap on the COM Ports tab.
20. Tap on New Outgoing Port.
21. Select the PSD200L and tap next.
22. Select a COM Port and remove the check box for Secure Connection.
23. Tap Finish at the bottom right of the screen.
24. Tap OK at the top right of the screen.
25. Tap X at the top right of the screen.
26. Start TerraSync.
27. Tap on Status and change it to Setup.
28. Tap on GPS Settings.
29. Change the COM Port to the COM Port with PSD200L.
30. Tap OK.
31. At the top right of the screen tap on GPS to connect to the receiver.
32. You should hear TerraSync indicate it has made the connection to the receiver.
33. Change back to the Status screen to verify you are receiver satellites and computing a GPS Position.