

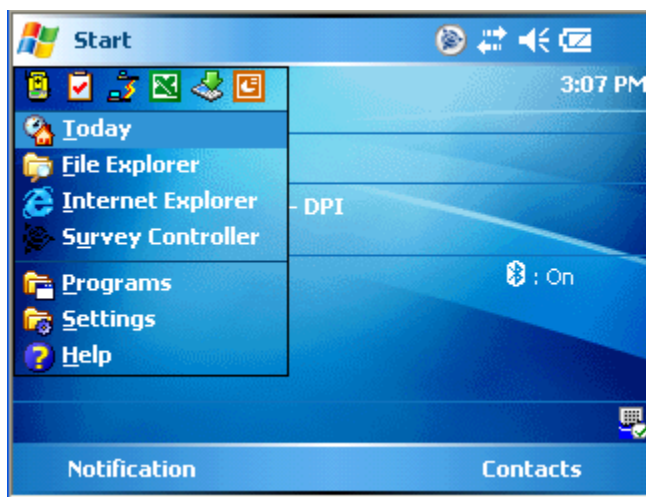
Creating a Bluetooth Connection Between a TSC2/Ranger and an Epoch 25 GPS Receiver

What is Bluetooth?

Bluetooth is a radio-based technology that allows devices to share information. Unlike other wireless technologies, such as infrared, the devices do not need to be “looking” at each other. As long as two Bluetooth devices are close enough to each other, it should be possible to make a connection.

Using a Bluetooth Dongle gives you a cable free solution between the data collector with Survey Pro software and an Epoch 25 receiver for RTK surveying.

Making a Bluetooth connection between the TSC2/Ranger Data Collector and an Epoch 25 Receiver



From the Windows main menu, tap on Start and then tap on Settings.



Tap on Connections.

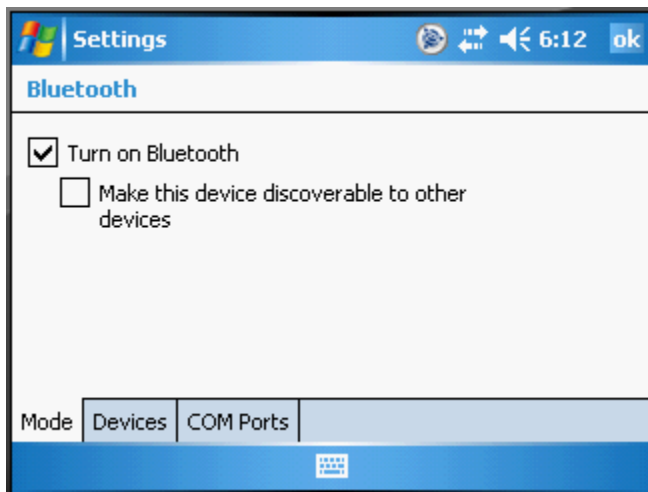


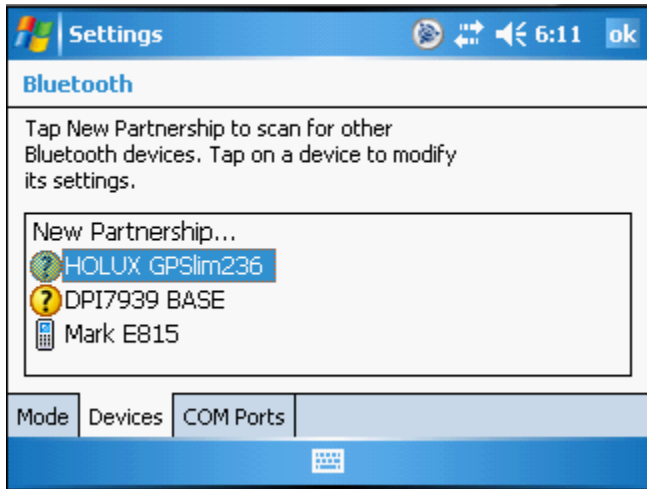
Tap On Bluetooth.



If this is the first time that you are trying to establish a Bluetooth connection between the TSC2/Ranger and the Epoch 25 receiver, you will need to turn Bluetooth on in the data collector.

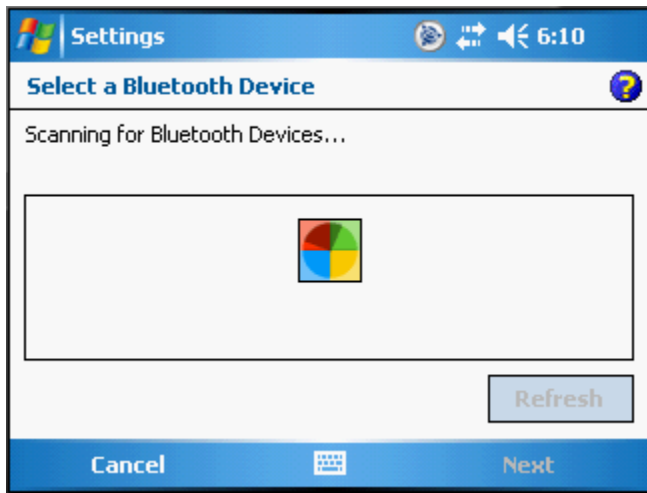
Tap on the check box for Turn on Bluetooth.



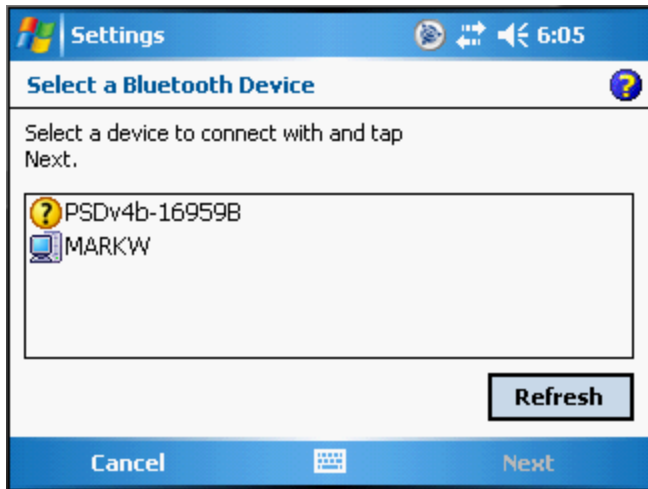


Attach the Bluetooth dongle to port 2 on the Epoch 25 by tightening the screws until the dongle is firmly attached. Turn on the receiver by pressing the green button on the bottom of the unit.

Once your Bluetooth dongle is attached and the receiver is turned on, tap on New Partnership.

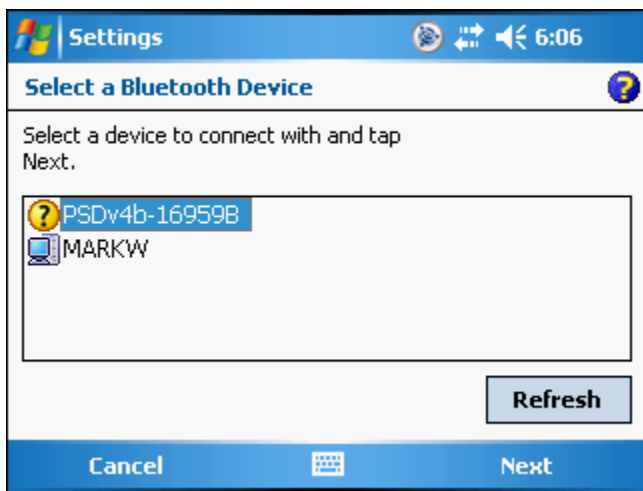


The TSC2/Ranger will scan for available Bluetooth devices.

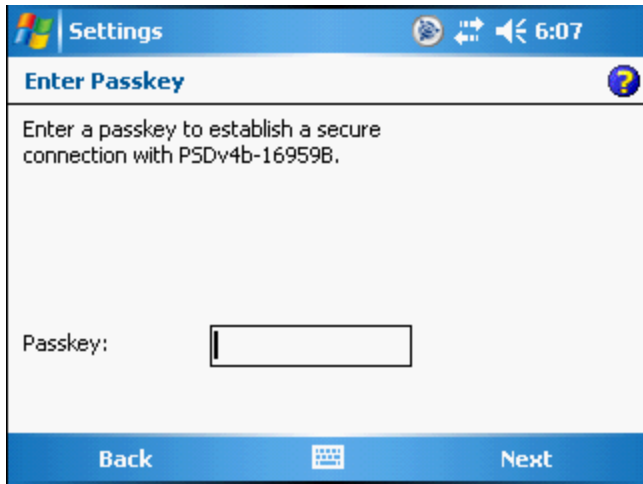


Once the receiver dongle is found it will be listed in the Select a Bluetooth Device screen.

Tap on the device to select it.

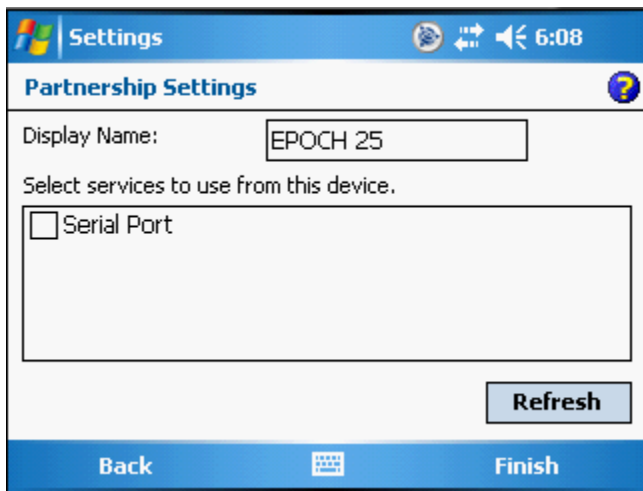


Tap on Next.



The Epoch 25 does not require a passkey.

Tap on Next.



Enter a name for your receiver in the Display Name box.

Tap on Finish.



You have successfully established a Bluetooth connection between the data collector and the Epoch 25 GPS receiver.

Tap on OK at the top right of the screen.