


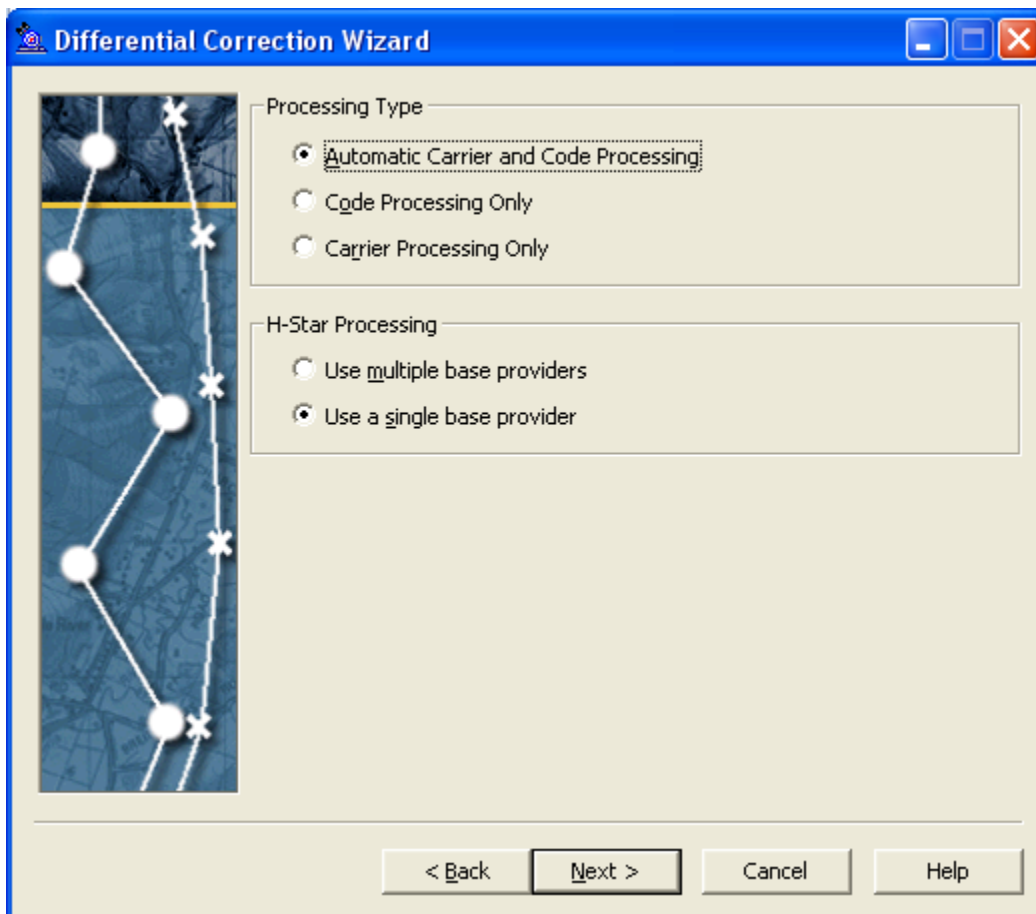
Creating Your Own Base Station Provider in Pathfinder Office V3.10 or Higher

When using CORS Sites to perform differential correction in Pathfinder Office V3.10 or higher you may not be able download the files or there is no data in the base station files. To correct this problem you can create your own base station provider in Pathfinder Office and use the base station files that are stored on the North Carolina and South Carolina Geodetic Surveys ftp sites where base station files are stored.

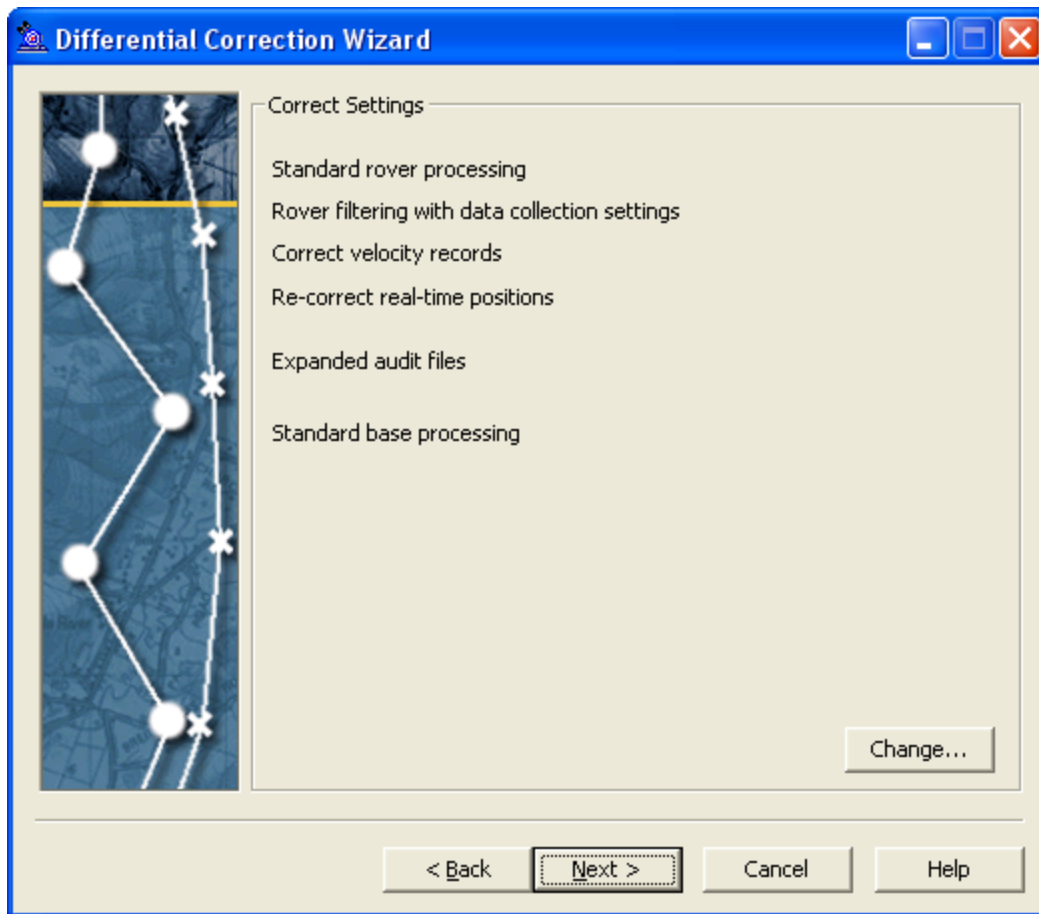
1. Download the **user_list.xml** file from www.duncan-parnell.com/support.html.
2. Place the file in C:\Program Files\Common Files\Trimble\Config. If this does not work try the following locations:
C:\Documents and Settings\User Login\Application Data\Trimble\GPS Pathfinder Office\Config
C:\Documents and Settings\All Users\Application Data\Trimble\GPS Pathfinder Office\Config
3. Start the Differential Correction Wizard.



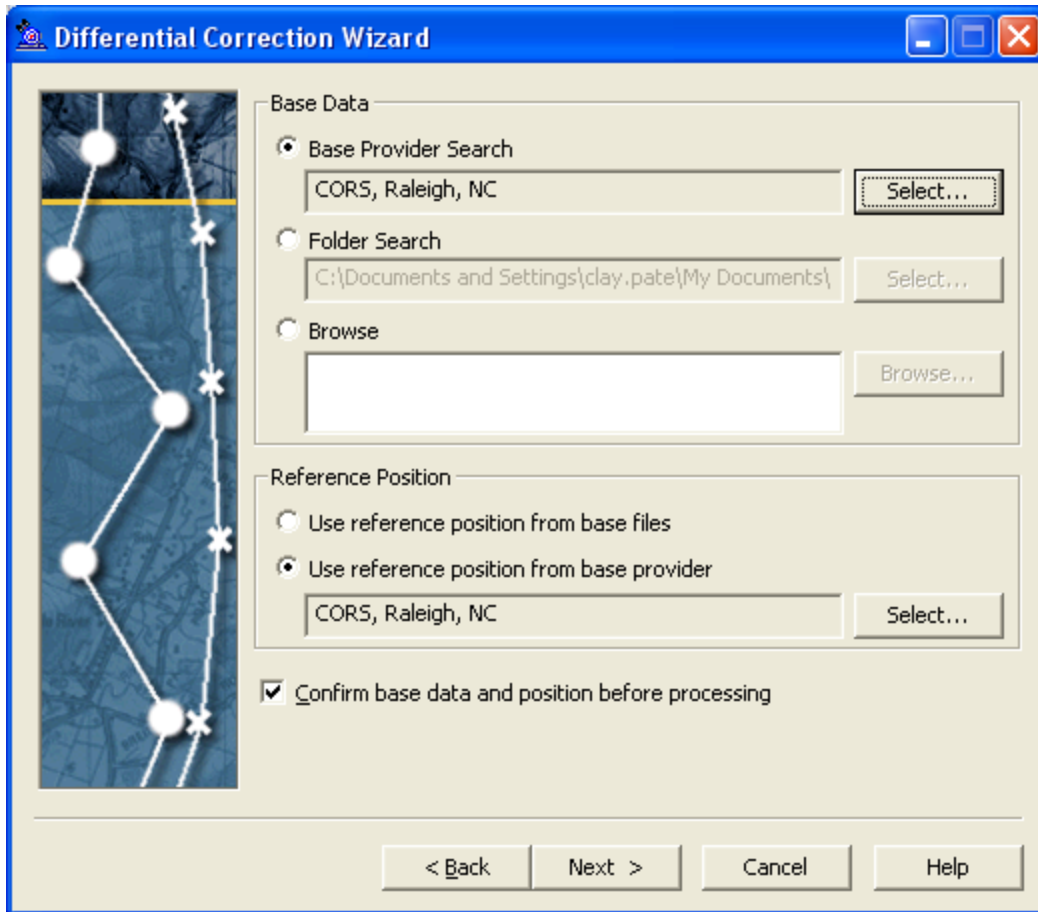
4. If your SSF file does not show up select the SSF file(s) to be corrected by click on the  icon.
5. Browse to where your SSF file(s) are located.
6. Select the file(s) and click on Open.
7. Click Next.
8. For the Processing Type Select – Automatic Carrier and Code Processing.
9. For H-Star Processing – Select either Use Multiple base providers or Use a single base provider. If your base provider is within 50 miles (80 km) of your work area it is recommended to use only a single base provider. If your base provider is outside 50 miles (80 km) of your work area it is recommended that you use three base stations to processes your data.



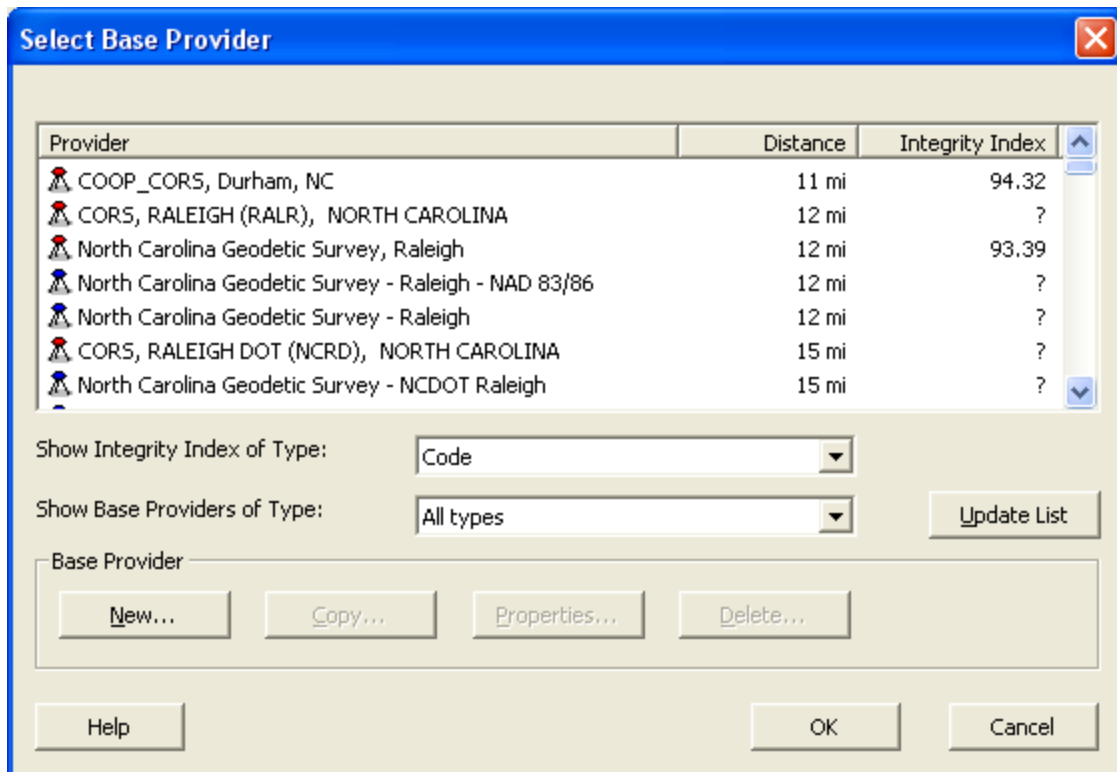
10. Click Next.



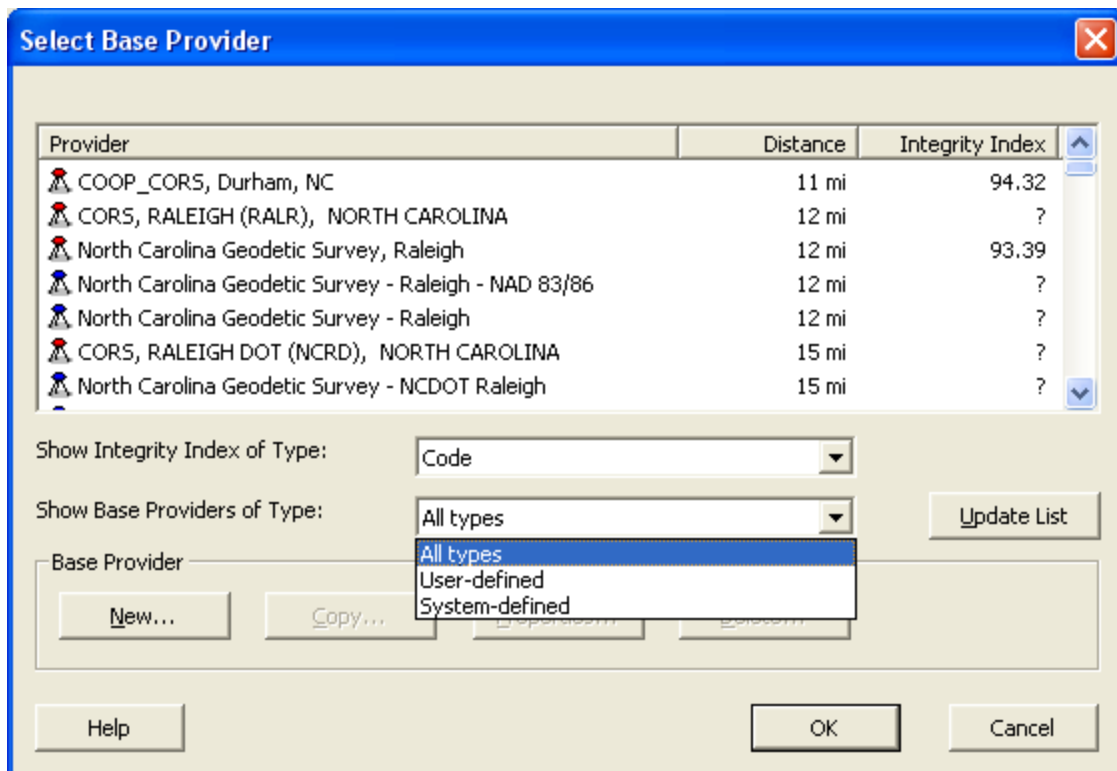
11. Click Next.



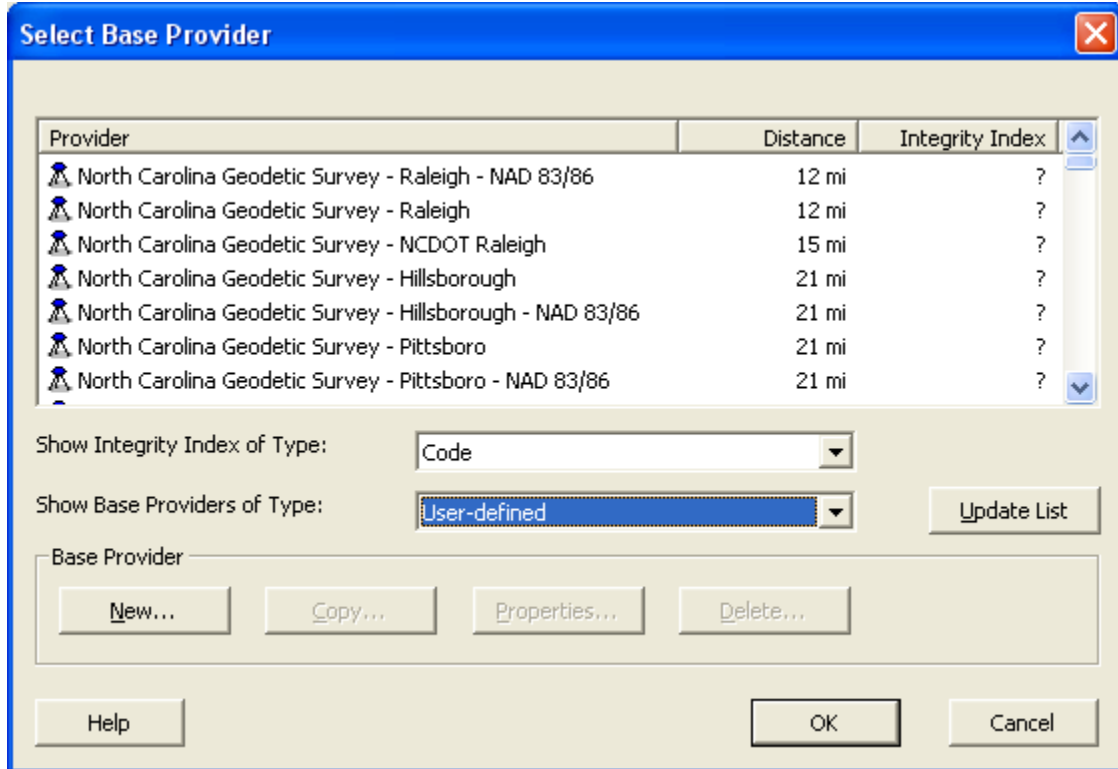
12. Under Base Data/Base Provider Search click the Select button.



13. The base stations that are in the user_list.xml file show up with blue tripod icons.
14. To narrow the list to base stations in the user_list.xml file click on the Show Base Providers of Type drop down list.



15. Select User-defined.

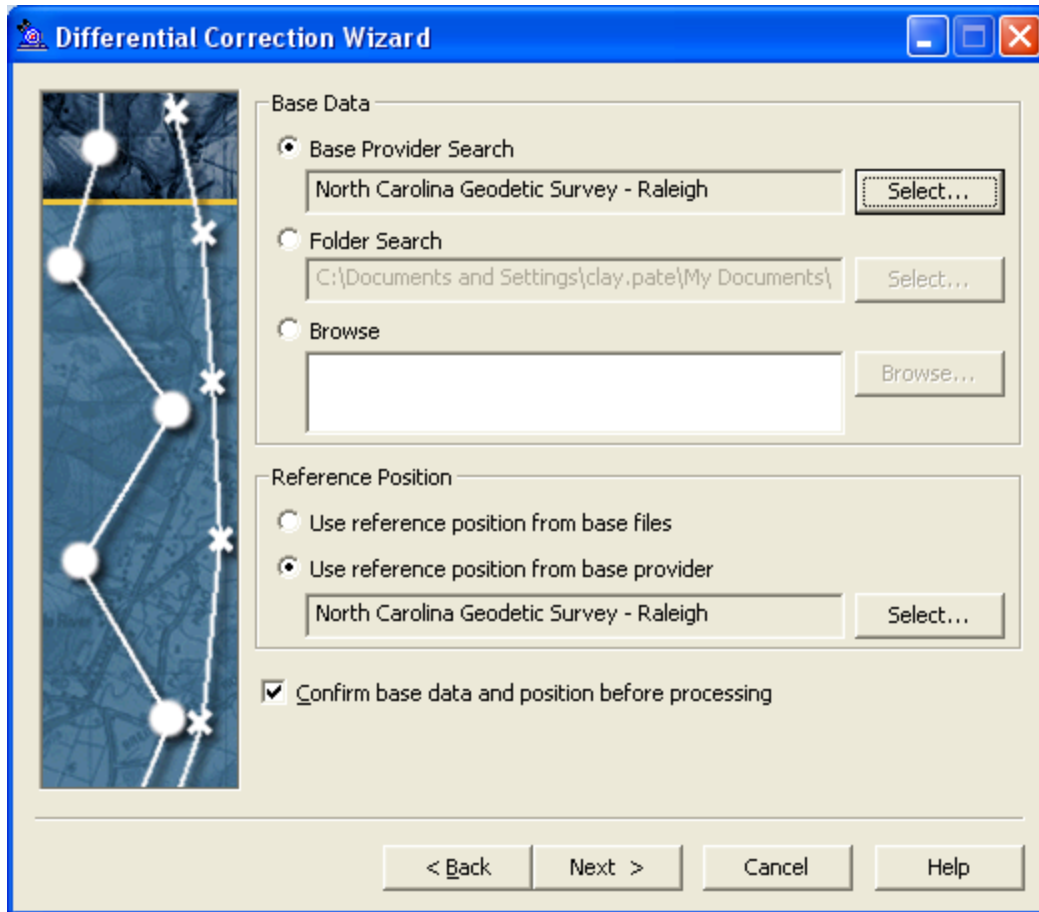


16. Select the base station you want to differentially correct your data and click OK.

Important Note:

In the User-defined base station list we have provided coordinates of base stations in North and South Carolina that reference the NAD 83/86 datum and NAD 83 (CORS96) datum.

Select the base station for the datum that you want to reference from the list.



17. Selecting the Reference Position.

Important Note:

Select **Use reference position from base provider** for all user defined base stations that are provided in the **user_list.xml**. The base station position that is used will be **NAD83/86** or the **NAD83 (CORS96) Datum**.

Therefore when selecting your coordinate system in Pathfinder Office when exporting to State Plane Coordinates select the NAD83 (Conus) Datum. This will retain the datum of differential correction source in your exported data.

18. Continue with the Differential Correction Wizard.