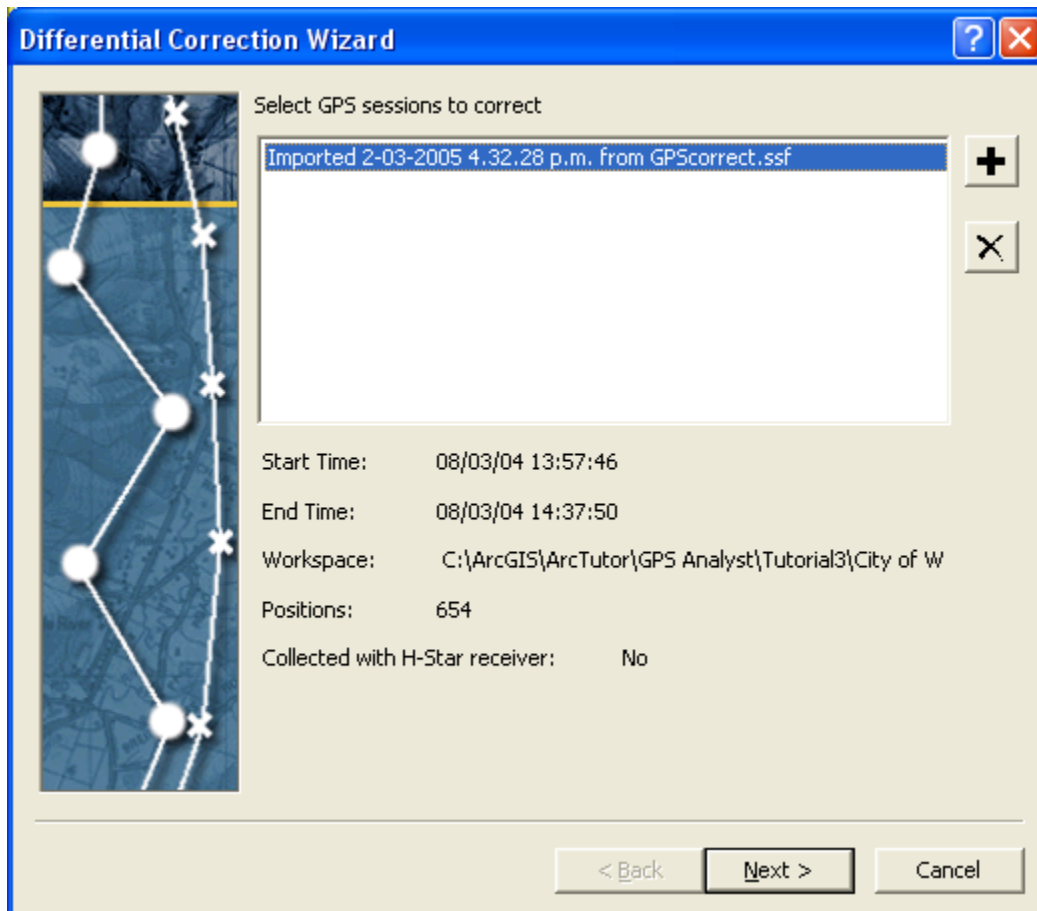


Creating Your Own Base Station Provider in GPS Analyst

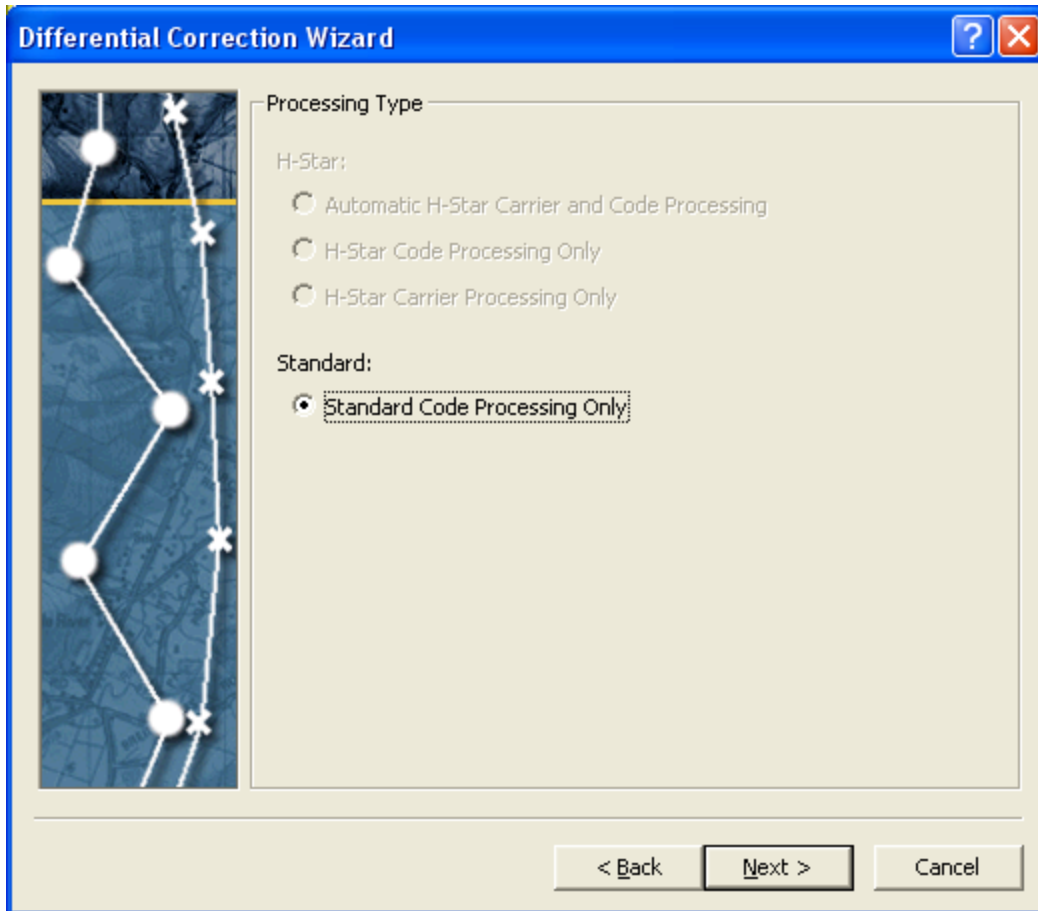
When using CORS Sites to perform differential correction in GPS Analyst you may not be able to download the files or there is no data in the base station files. To correct this problem you can create your own base station provider in GPS Analyst and use the base station files that are stored on the North Carolina and South Carolina Geodetic Surveys ftp sites where base station files are stored.

1. Download the **user_list.xml** file from www.duncan-parnell.com/support.html.
2. Place the file in C:\Documents and Settings\User Login\Application Data\Trimble\GPS Analyst.
3. Start the Differential Correction Wizard.

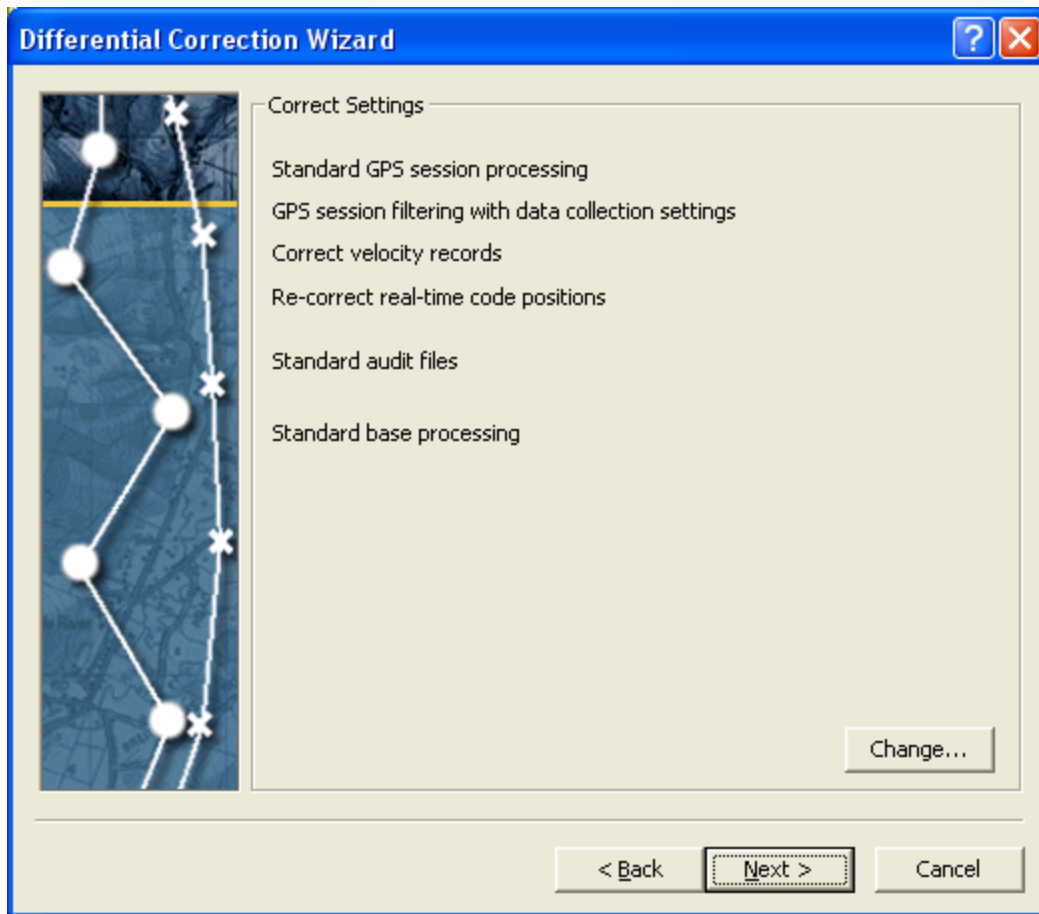


4. If your SSF file does not show up select the SSF file(s) to be corrected by click on the  icon.
5. Browse to where your SSF file(s) are located.

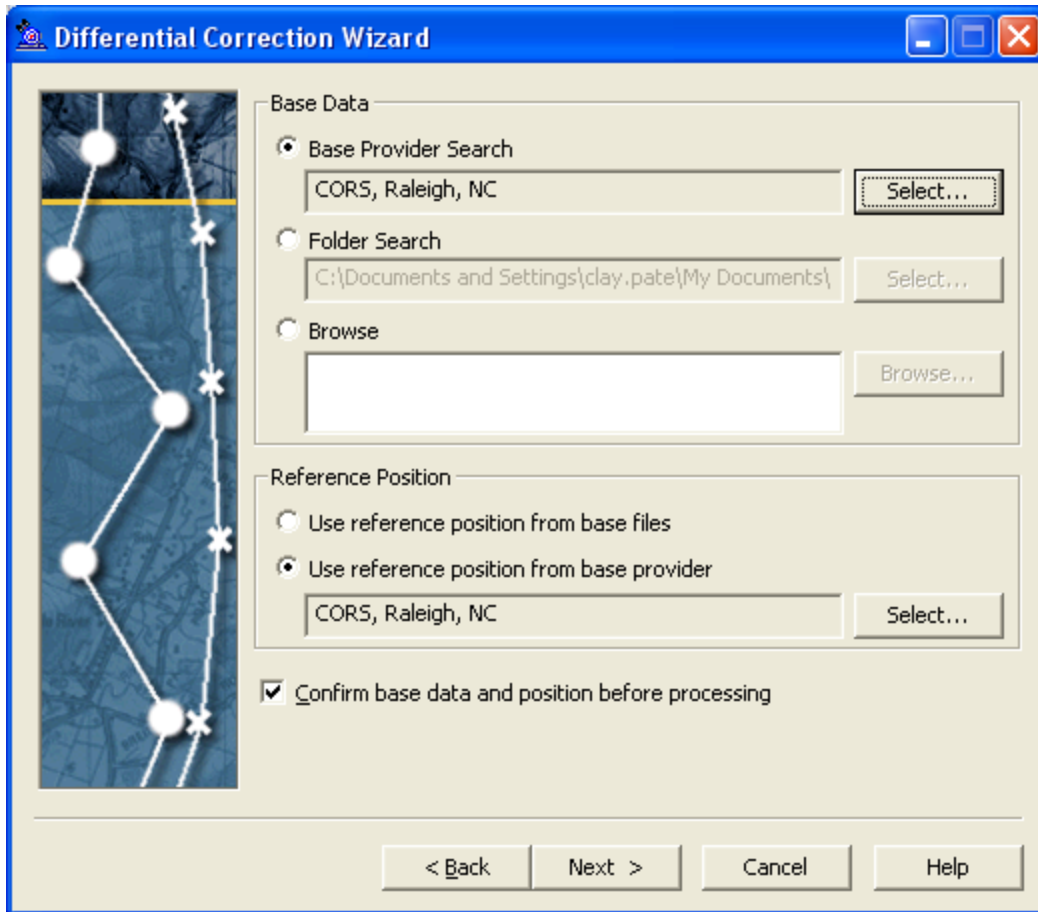
6. Select the file(s) and click on Open.
7. Click Next.
8. For the Processing Type Select either Automatic H-Star Carrier and Code Processing or Standard Code Processing Only.
9. For H-Star Processing – Select either Use Multiple base providers or Use a single base provider. If your base provider is within 50 miles (80 km) of your work area it is recommended to use only a single base provider. If your base provider is outside 50 miles (80 km) of your work area it is recommended that you use three base stations to processes your data.



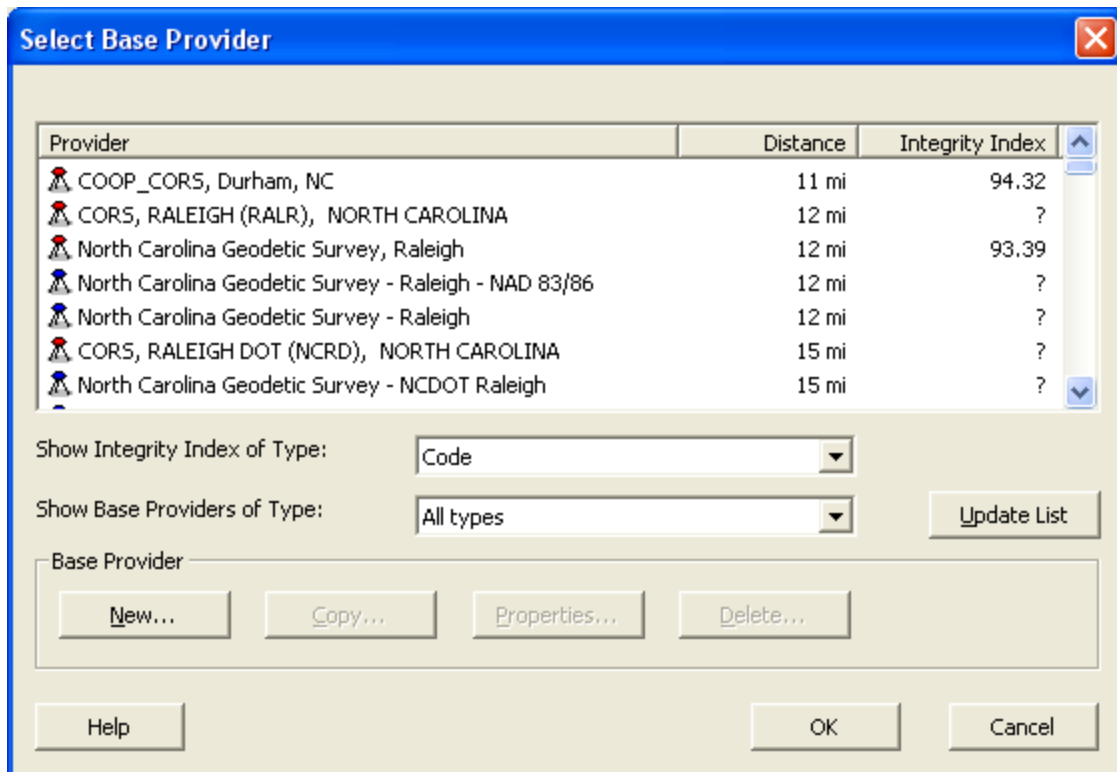
10. Click Next.



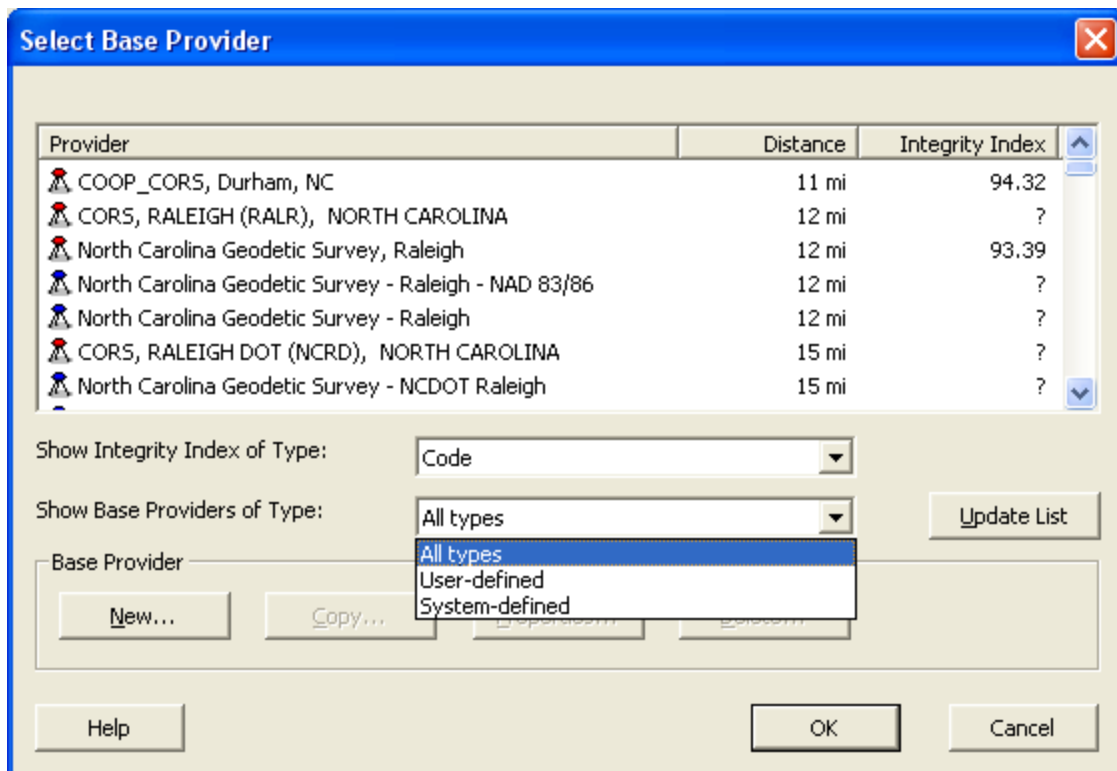
11. Click Next.



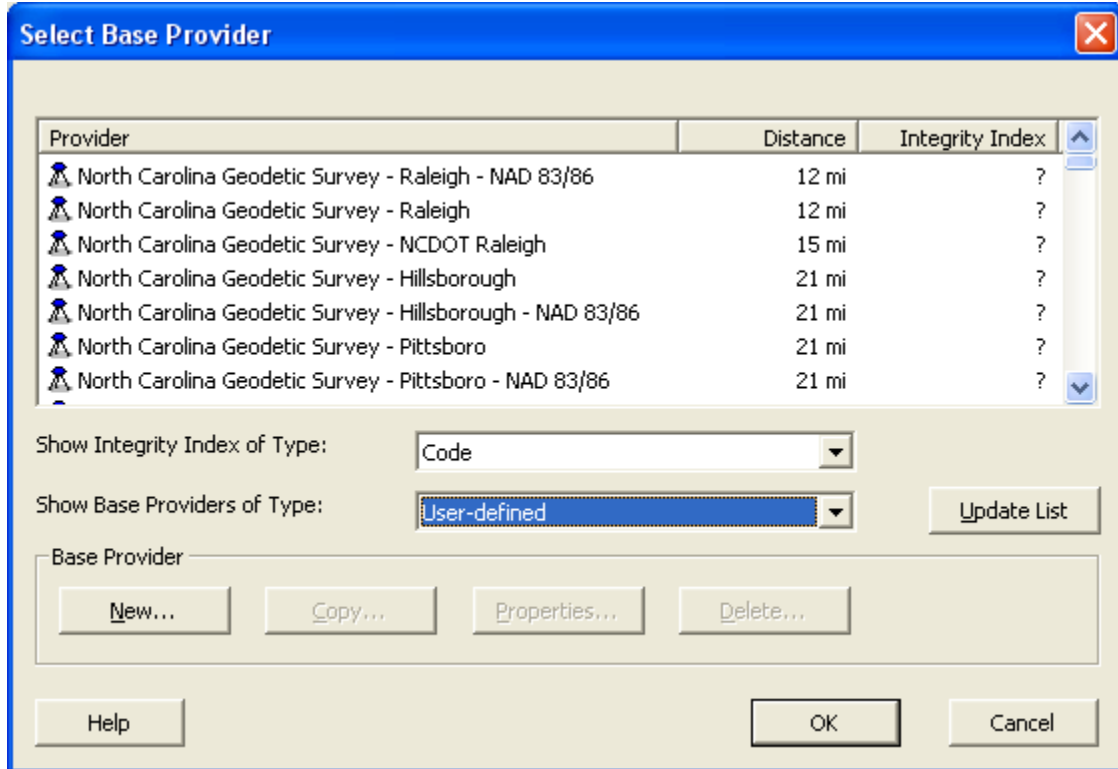
12. Under Base Data/Base Provider Search click the Select button.



13. The base stations that are in the user_list.xml file show up with blue tripod icons.
14. To narrow the list to base stations in the user_list.xml file click on the Show Base Providers of Type drop down list.



15. Select User-defined.

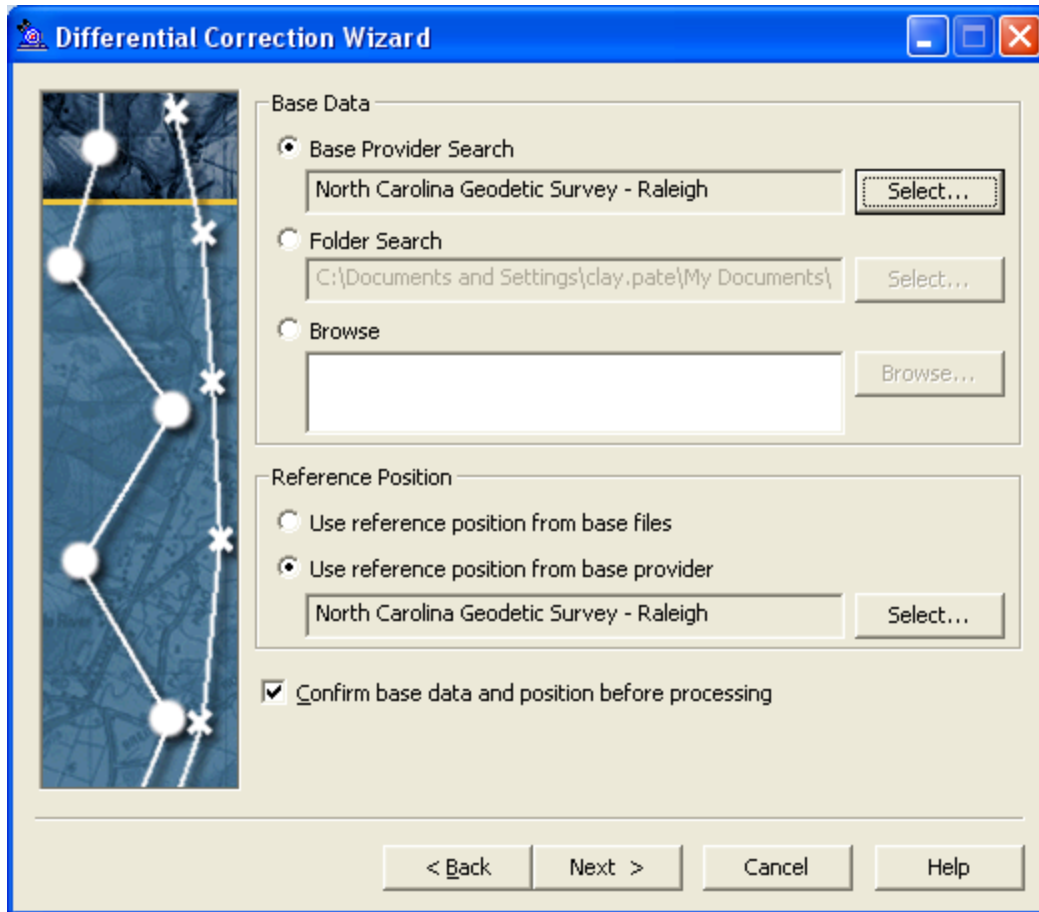


16. Select the base station you want to differentially correct your data and click OK.

Important Note:

In the User-defined base station list we have provided coordinates of base stations in North and South Carolina that reference the NAD 83/86 datum and NAD 83 (CORS96) datum.

Select the base station for the datum that you want to reference from the list.



17. Selecting the Reference Position.

Important Note:

Select **Use reference position from base provider** for all user defined base stations that are provided in the **user_list.xml**. The base station position that is used will be **NAD83/86** or the **NAD83 (COR96) Datum**.

When creating your feature classes to be differentially corrected using the **NAD83/86** base station position for state plane coordinates select the NAD 1983 datum. When asked to select your Geographic Transformation select the **NAD_1983_to_WGS_84_1**.

When creating your feature classes to be differentially corrected using the **NAD83 (COR96)** base station position for state plane coordinates select the NAD 1983 HARN datum. When asked to select your Geographic Transformation select the **NAD_1983_HARN_To_WGS_1984**.

18. Continue with the Differential Correction Wizard.