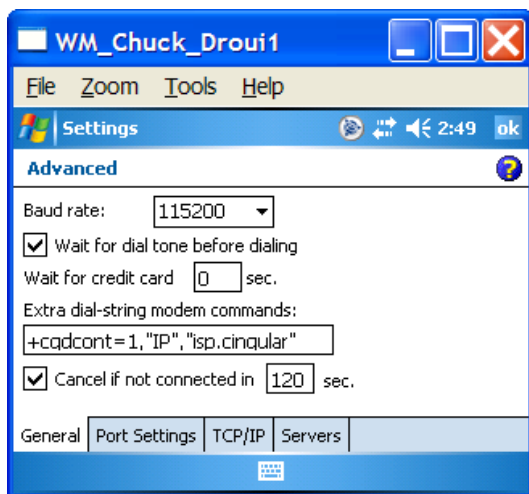


Configuring the Enfora GPRS Compact Flash Card for use with VRS Networks and the TSC2

1. Plug the Enfora GPRS Compact Flash card into one of the available Compact Flash slots on the TSC2.
2. The TSC2 will automatically recognize the Enfora GPRS Compact Flash card.
3. Click on Start at the top left of the screen.
4. Tap on Settings.
5. Tap on the Connections Tab located at the bottom of the screen.
6. Tap on the Connections Icon.
7. Tap on Add a new modem connection under My ISP.
8. Enter Enfora for the Name of the Connection.
9. Tap on the dropdown list for Select a Modem.
10. Choose Enfora Card.
11. Tap on Next.
12. Enter *99***1# as the number to dial.
13. Tap on Next.
14. User name – ISP@CINGULARGPRS.COM. **Note: This is case sensitive.**
15. Password – CINGULAR1. **Note: This is case sensitive.**
16. Domain – Leave Blank.
17. Tap on Advanced button.



18. Baud rate – Change to 115200.
19. Extra dial-string modem commands - +cgdcont=1,\"IP\", \"isp.cingular\" **Note: This is case sensitive.**
20. Tap on OK.
21. Tap on Finish.

22. Tap OK at the top right of the screen.
23. Tap X at the top right of the screen.

Testing Your Internet Connection

1. Tap on Start.
2. Tap on Settings.
3. Tap on Connections.
4. Tap on Manage existing connections under My ISP.
5. Tap and hold on your connection.
6. Tap on Connect.
7. The “connecting” window will appear and dial the number.
8. When the window disappears, you are connected to the internet.
9. To disconnect tap on the icon to the left of the speaker icon at the top of the screen.
10. Tap on disconnect.