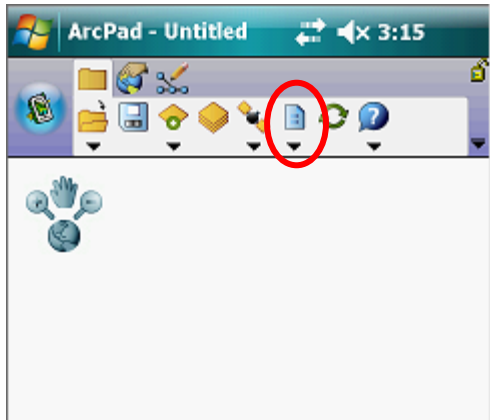
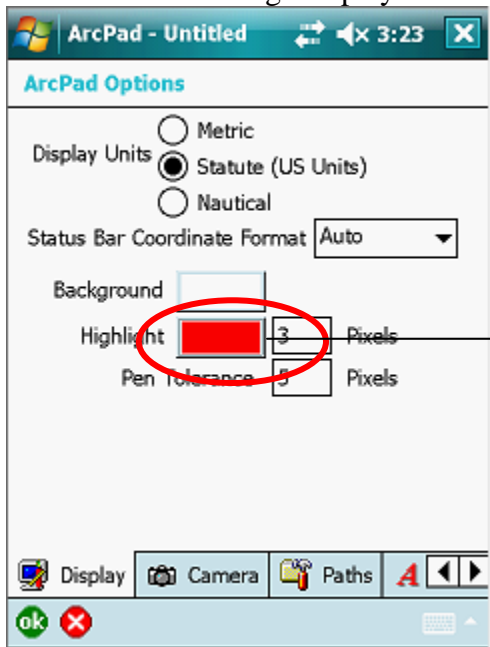


ArcPad 8 Settings with Trimble GPSCorrect

Tap on Options icon



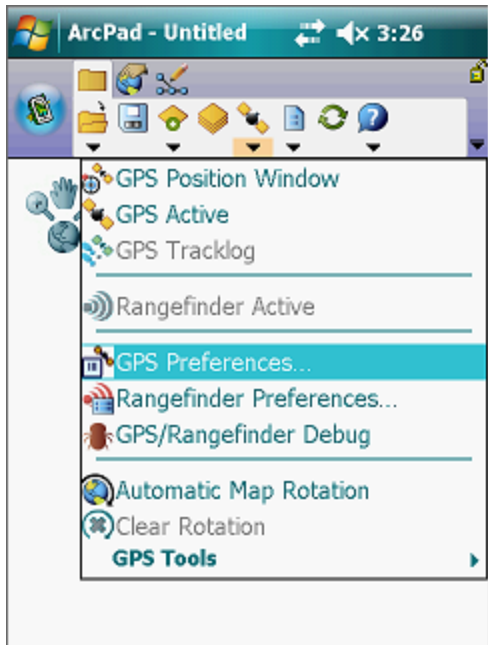
Change display units to US



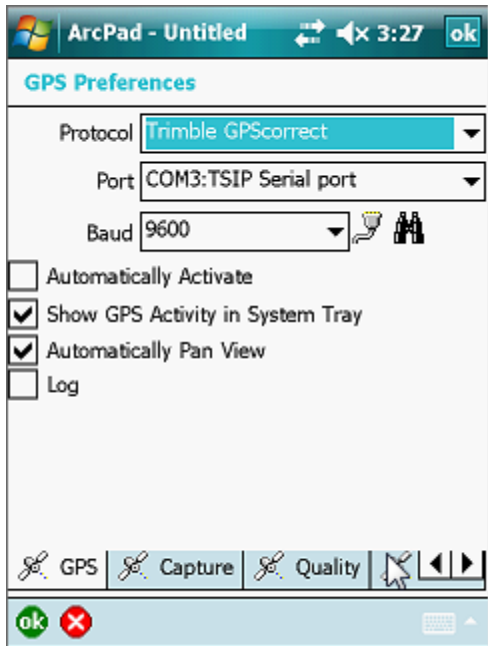
Optional to change the Highlight Color. I think the default color is a little hard to see. I usually change mine to red.

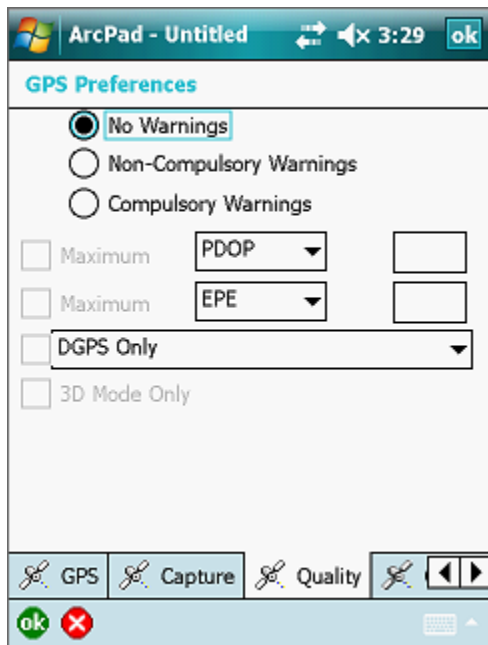
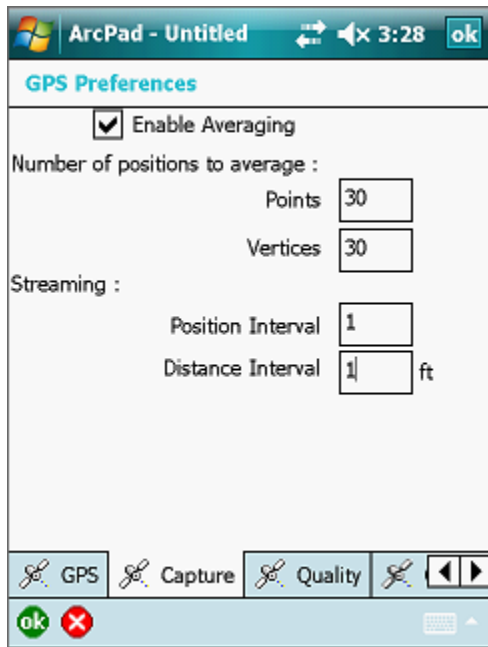
Tap OK

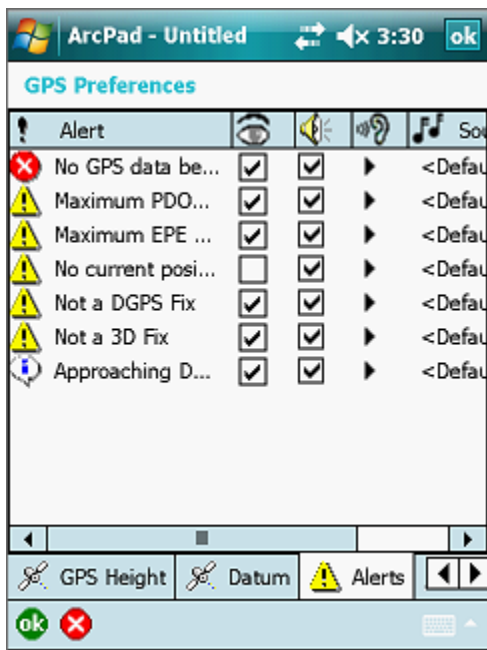
Tap dropdown under the Satellite icon, go to GPS Preferences



Change the following tabs (for a GeoExplorer):

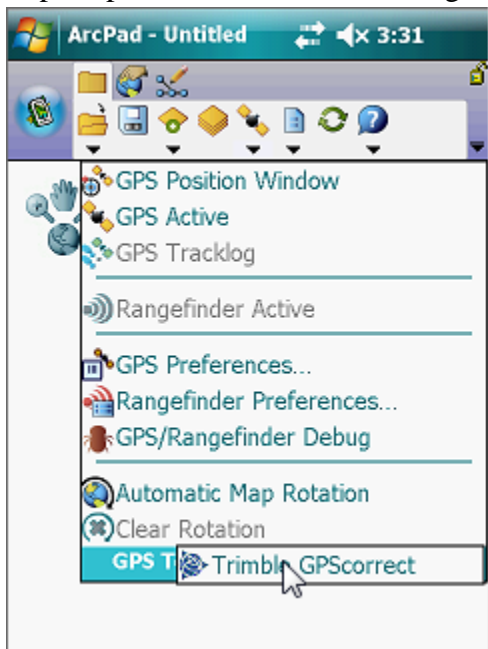




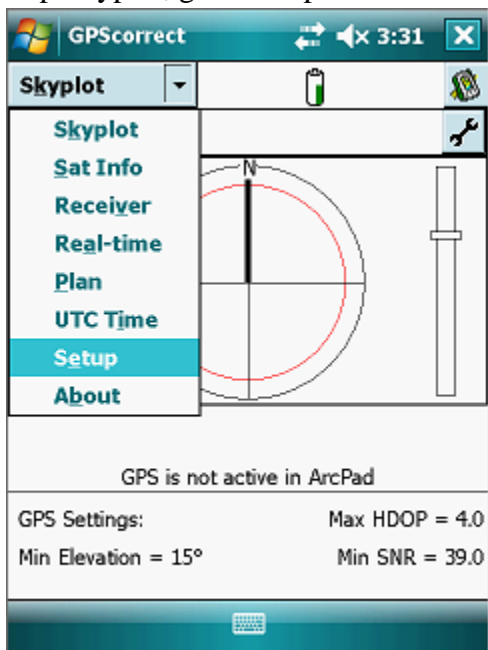


Tap OK

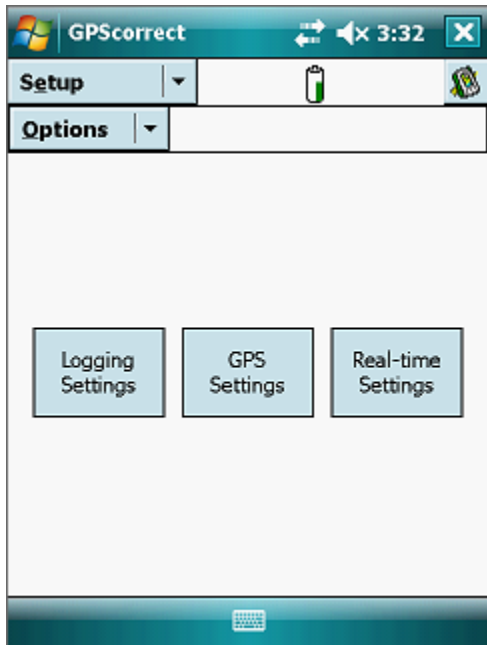
Tap dropdown under the satellite, go to GPS Tools → Trimble GPScorrect



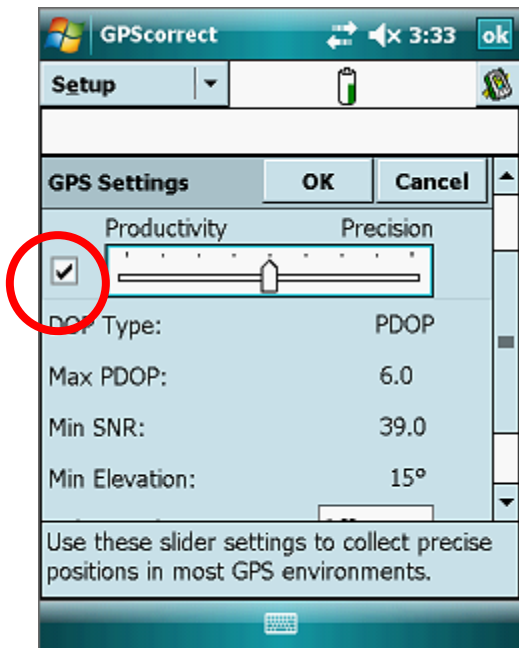
Tap Skyplot, go to setup.



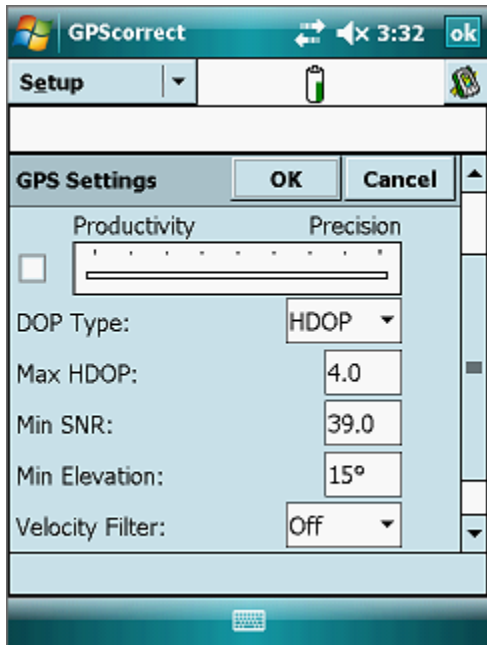
Select GPS Settings



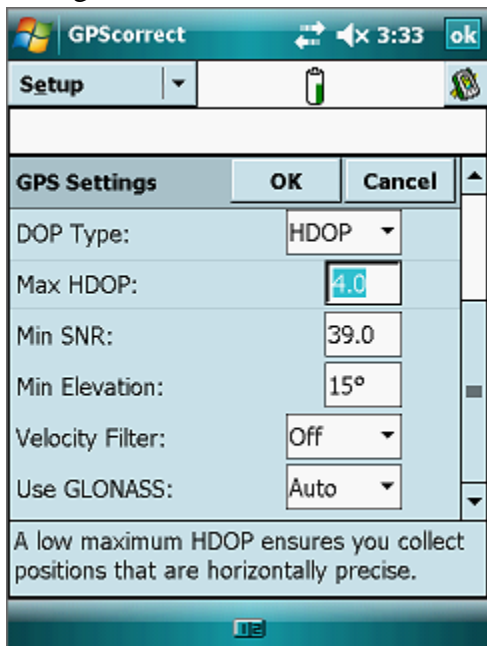
UNCHECK box next to slider



Change PDOP to HDOP

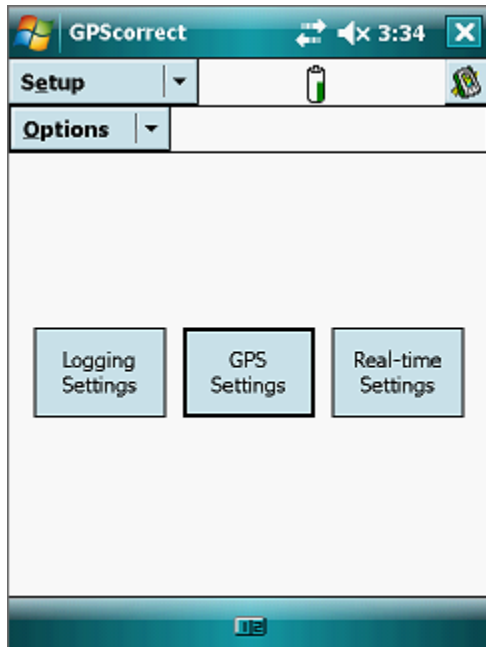


Change numbers to:



Tap OK

Select Realtime Settings:



Change to:

