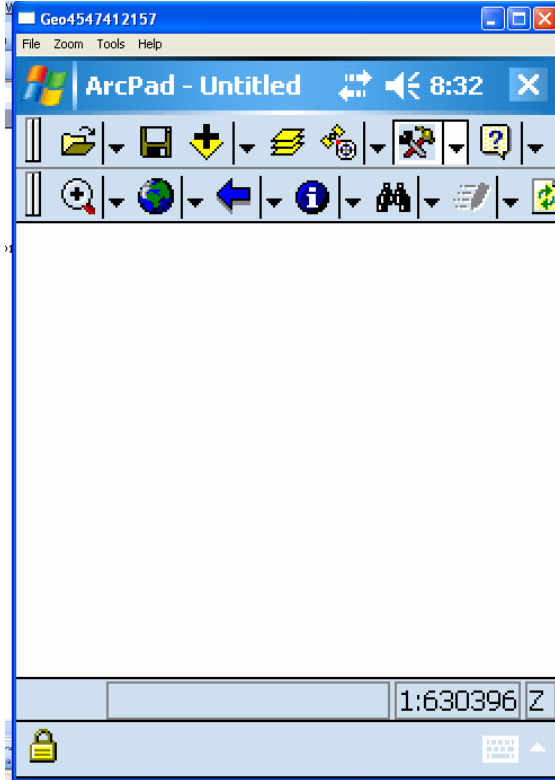
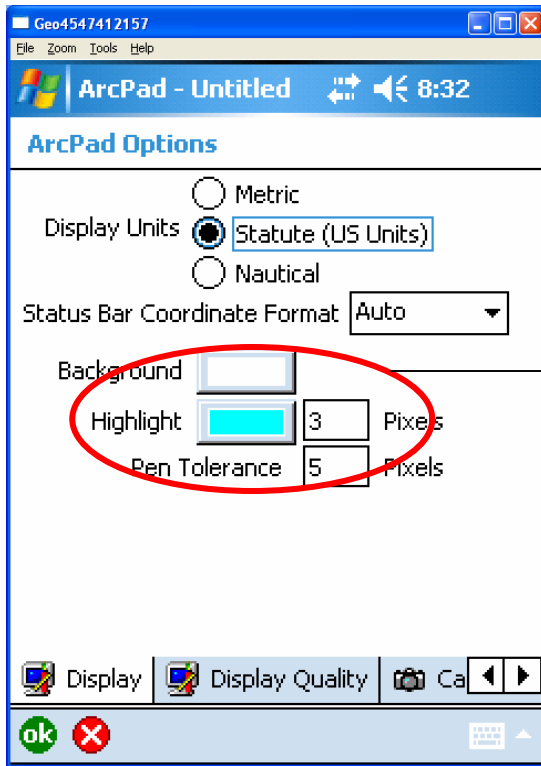


ArcPad 7.0.1 Settings with Trimble GPScorrect

Click Hammer and Wrench (Options)



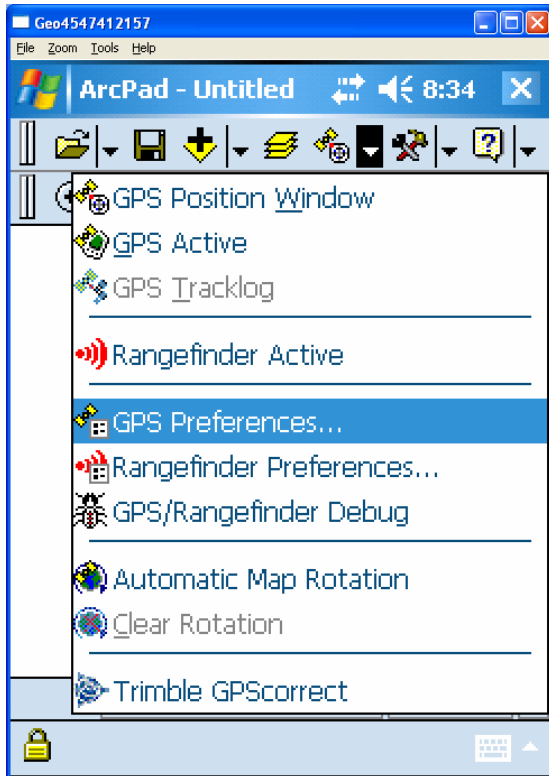
Change display units to US



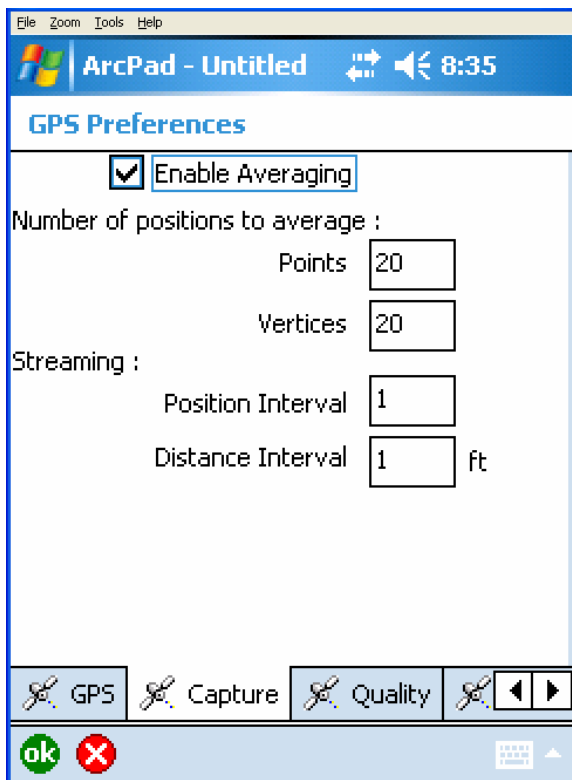
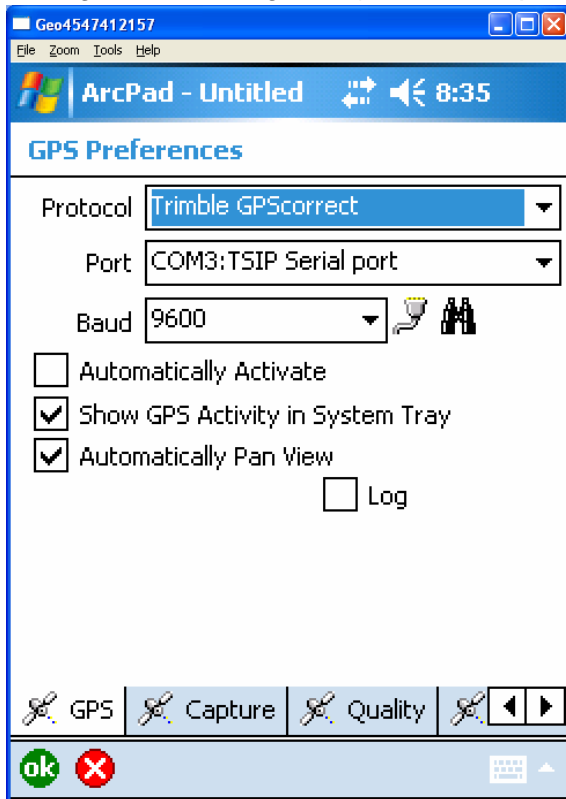
Optional to change the Highlight Color. I think the default color is a little hard to see. I usually change mine to red.

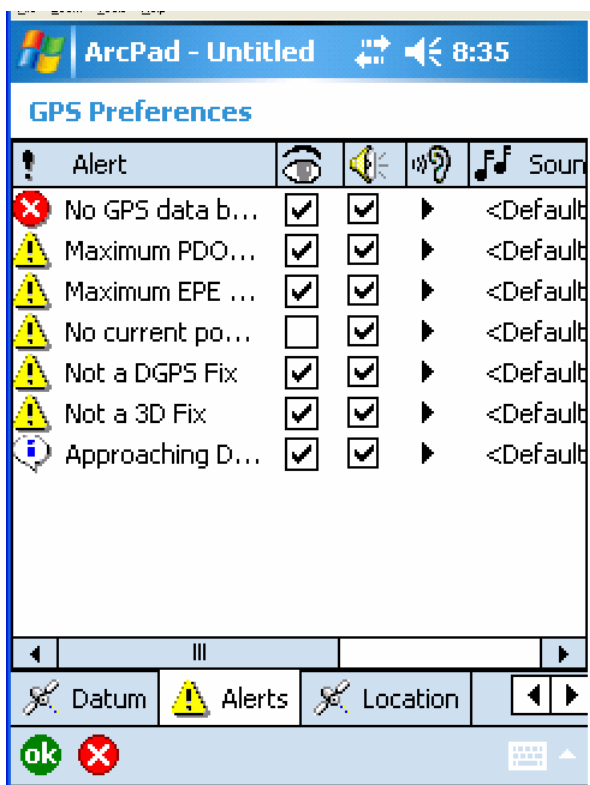
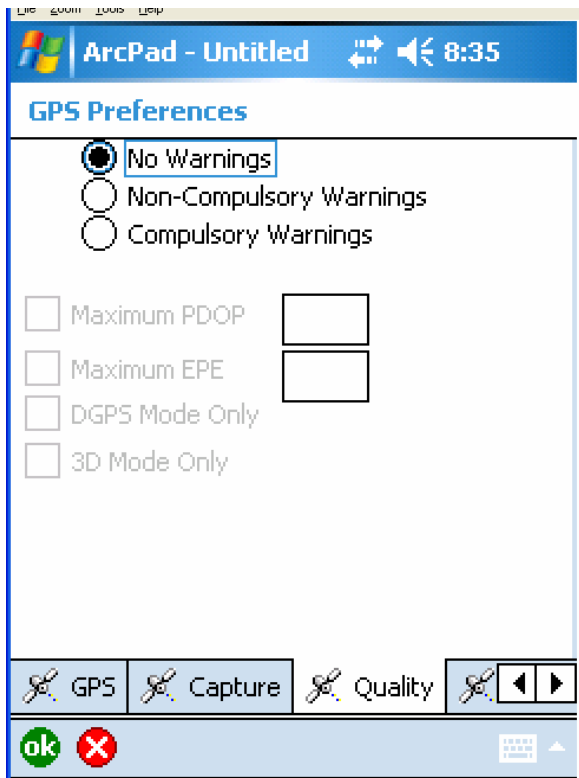
Click OK

Tap dropdown next to Satellite icon, go to GPS Preferences



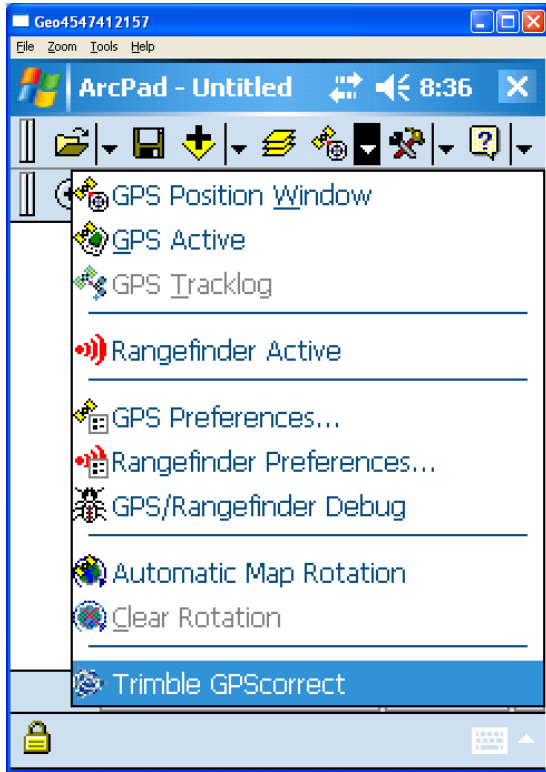
Change the following tabs (for a GeoExplorer):



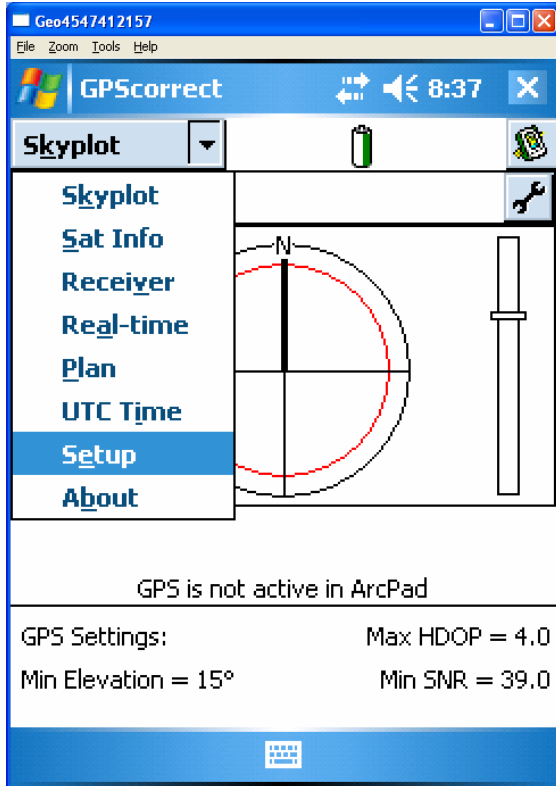


Click OK

Tap dropdown next to satellite, go to Trimble GPSCorrect

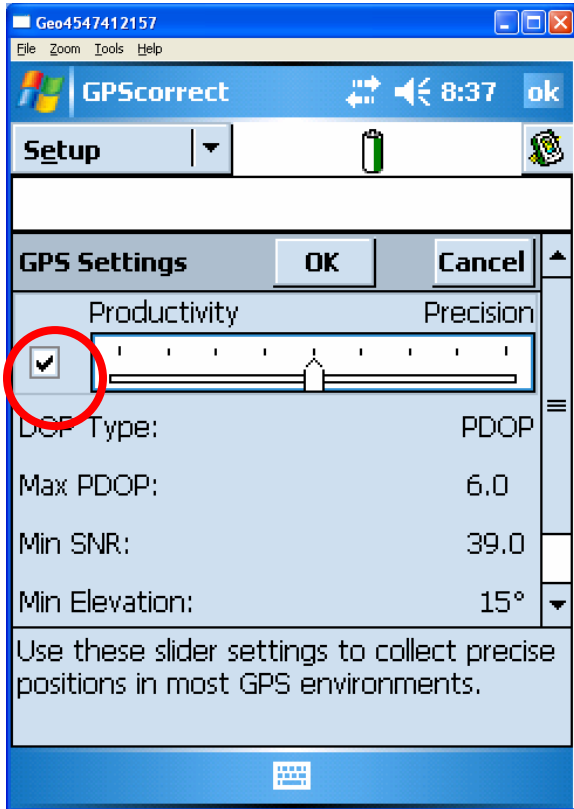


Tap Skyplot, go to setup.

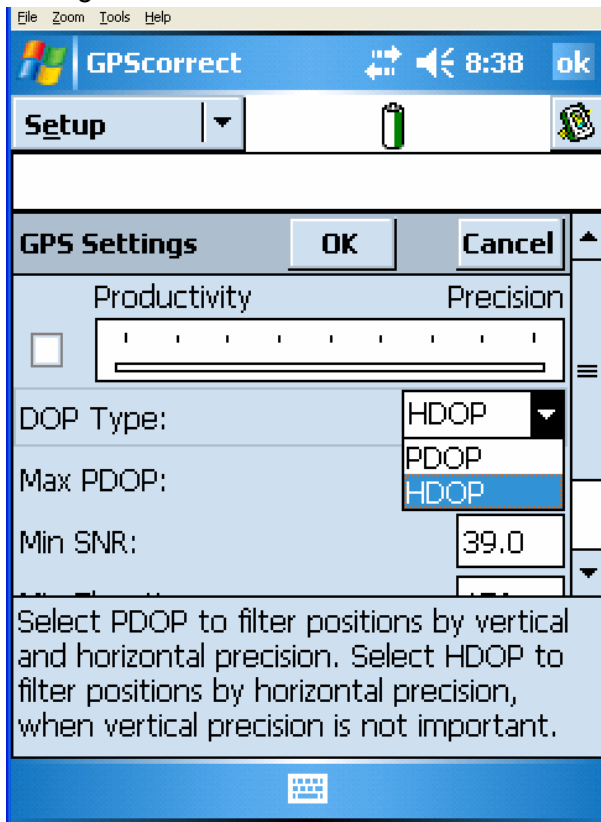


Select GPS Settings

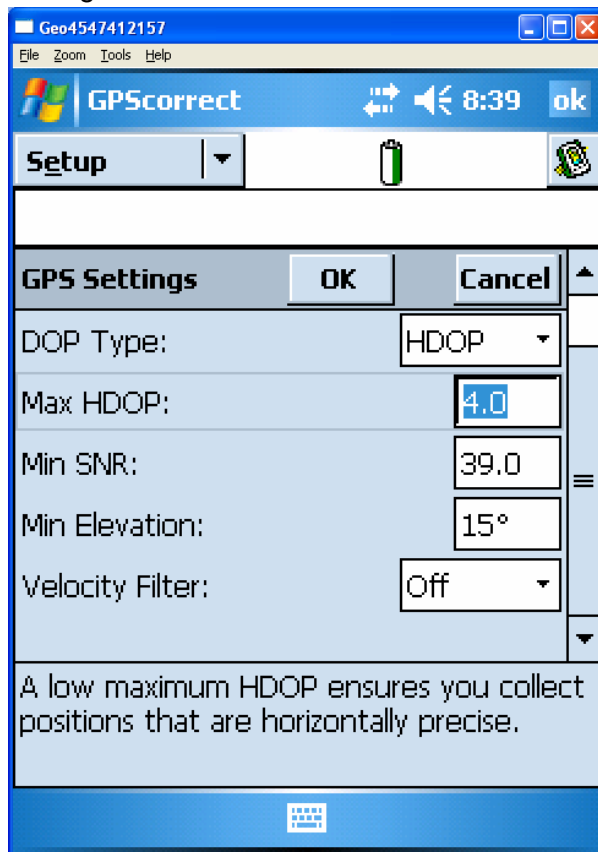
UNCHECK box next to slider



Change PDOP to HDOP



Change numbers to:



Click OK

Select Realtime Settings:

Change to:

