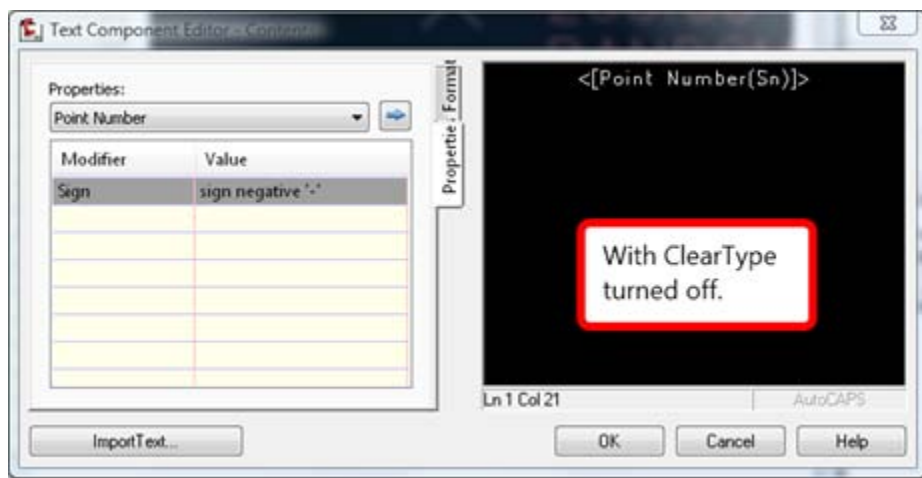
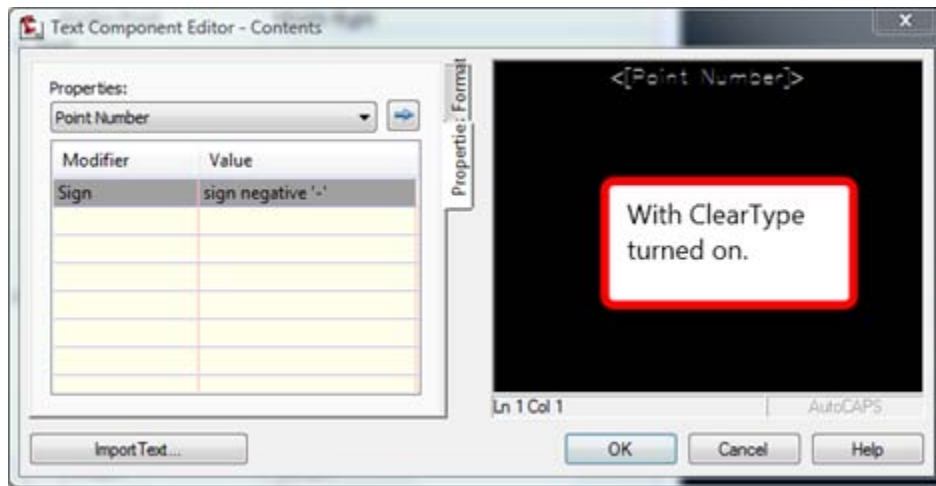


## ClearType... it's anything but clear.

**Editor's note:** This is a recent posting from the BLOG – Being Civil (<http://beingcivil.typepad.com>). I experienced this issue back in August of 2008 and with the help of the great people at Autodesk Support was able to get a quick response to the problem. This particular BLOG was created by three Autodesk support guys and should shape up to be a good site.

## ClearType... it's anything but clear.

Have you ever been editing a Civil 3D Style in your Text Component Editor and had a hard time making out what the text said? Don't worry. It's not old age and it's not the 14 hours you spent in front of the computer yesterday. Its Windows ClearType, and it doesn't play nicely within the Editor. Here are a couple of screenshots that show you the difference.



Luckily, this is a quick fix for this:

- Right-click on your desktop and select "Properties"
- On the Appearance Tab, select "Effects..."
- Here, change the smoothing method from ClearType to Standard, or uncheck the smoothing all together

In Windows Vista, you get the same result with a few extra steps:

- Right-click on your desktop and select "Personalize"
- Select Window Color and Appearance, then select "Open classic appearance properties..."
- In this new dialog box, select "Effects..."
- Change the smoothing, as mentioned above



**Editors Note:** I've done this on my system and it works extremely well.